



The Bailey B

1752 SQ FT

6014 Schonsee Way NW

- Classic III Specifications
- Two storey, 4 bedroom, 2.5 bath family home with a bonus room
- Sidewall fireplace with TV niche above
- Stainless steel hood fan
- Laminate and ceramic tile throughout the main floor and tile in the 2nd floor bathrooms
- Kitchen cabinets to include a bank of pot and pan drawers, extended cabinet over the range, crown molding and a raised cabinet over the range and the fridge
- Upgraded tile backsplash
- Master bedroom with a walk in closet and a 4 piece ensuite
- Railing on the main floor with Victorian Caps
- High efficiency furnace and 40 gal hot water tank
- 3 piece rough in basement ideal for future development
- Low E Argon windows and 6 ft patio doors.
- 2 car front attached garage (20' x 22') insulated and dry walled

Schonsee Showhome

7858-170A Ave, Edmonton AB

780.457.1956

schonseesales@bedrockhomes.ca

Job # SCH-0-032229 Lot 41, Block 2

Notes:

bedrockhomes.ca

VISIT US AT ANY OF OUR SHOWHOMES MON TO THURS 3 - 8PM, WEEKENDS & HOLIDAYS 12 - 5PM



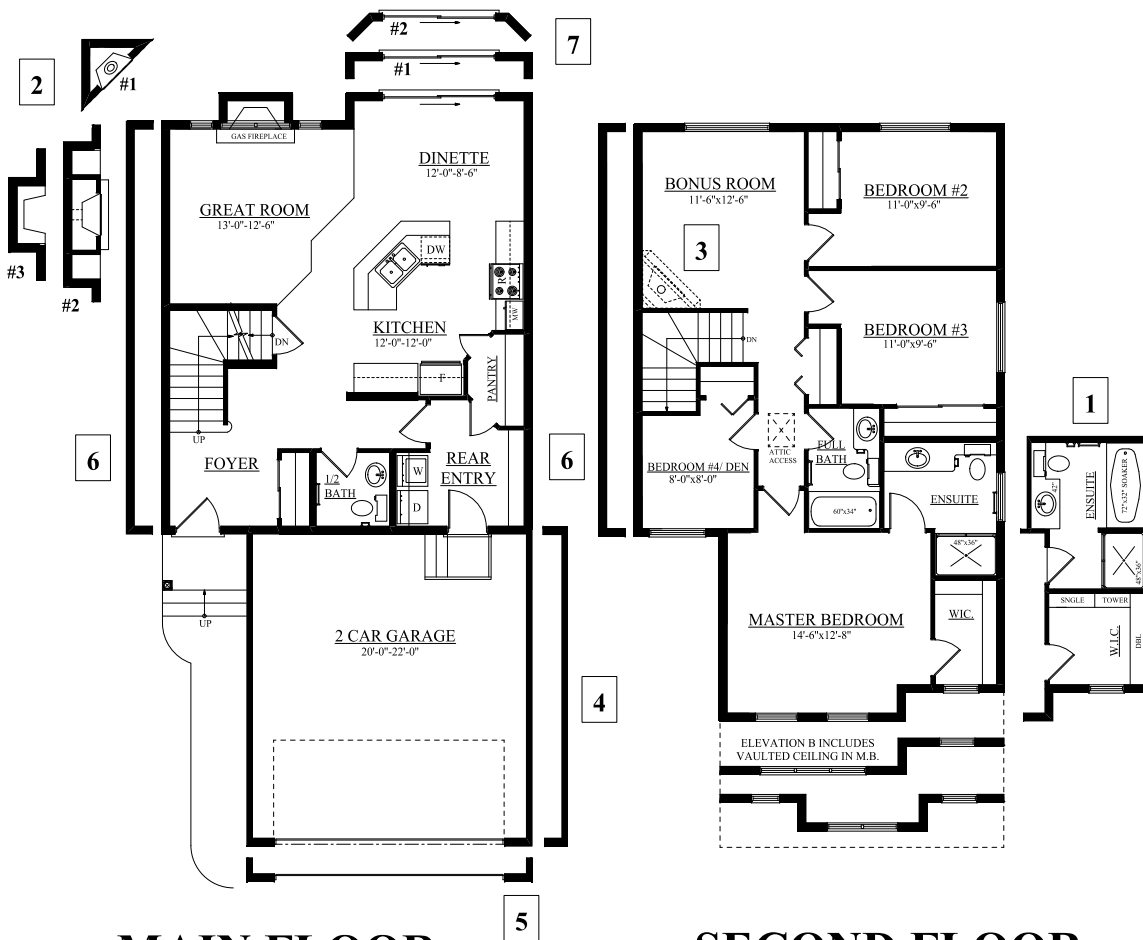
BEDROCK
• HOMES LTD. •
HOMES BUILT TO LAST

The Bailey B
 1752 SQ FT
 6014 Schonsee Way NW



Schonsee Showhome
 7858-170A Ave, Edmonton AB
 780.457.1956
 schonseesales@bedrockhomes.ca

Job # SCH-0-032229 Lot 41, Block 2



MAIN FLOOR
 790 SQFT

SECOND FLOOR
 962 SQFT

bedrockhomes.ca

VISIT US AT ANY OF OUR SHOWHOMES MON TO THURS 3 - 8PM, WEEKENDS & HOLIDAYS 12 - 5PM

