

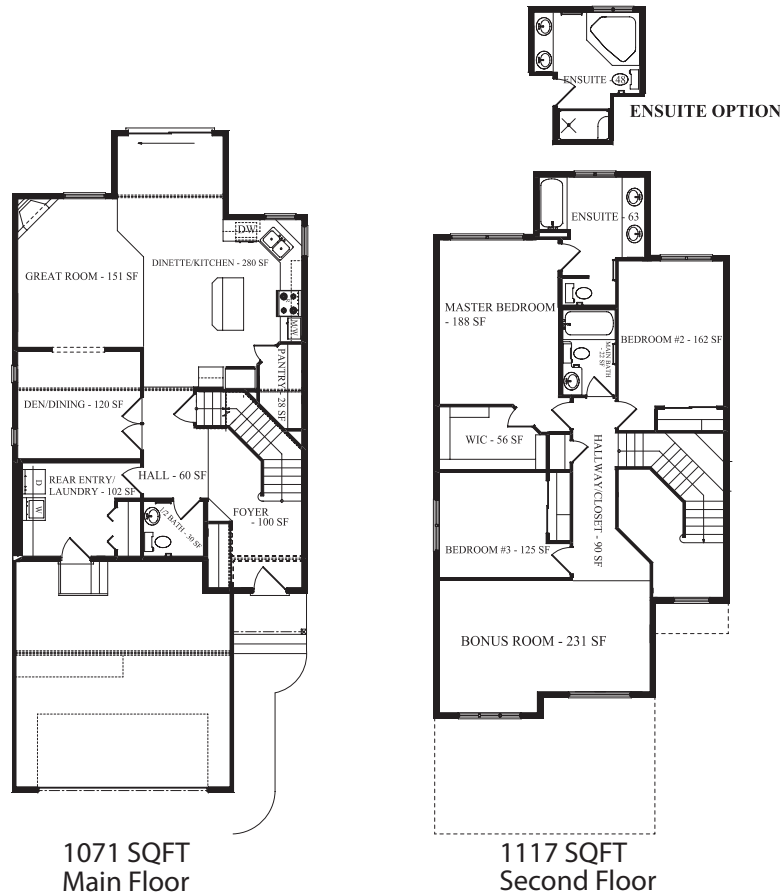


Job # SCH-0-032004 , Lot 30, Block 2

THE CARLTON C - 2188 SQ FT

16936 - 76 Street Two-Storey with walk out basement

- 2188 Sq. Ft. (Main 1071 Sq. Ft., Second 1117 Sq. Ft.)
- Hardwood in the kitchen , pantry, dinette, main hall, great room and den
- Ceramic tile backsplash in kitchen
- Ceramic tile in the rear entry, 1/2 bath, front entry, main bath, ensuite and laundry room
- Maple railings with metal spindles throughout main and second floor
- Stainless steel range hood fan
- Premium lighting package including pot lights and pendants lights in the kitchen
- 41" high cabinets in kitchen
- Master bedroom features a 4 piece ensuite including large corner soaker tub and large shower
- Cozy gas sidewall fireplace in the great room
- 9' ceilings on main floor
- 11' X 12' pressure treated deck
- Walk out basement with 9' ceiling
- Additional windows facing the adjacent park
- Granite countertops in the kitchen with an under mount sink
- Exterior stone on the 23' X 22' garage, 2nd floor and front post



1071 SQFT
Main Floor

1117 SQFT
Second Floor

Carmen Siemens - Area Manager
 A 7858-170 A Ave, Edmonton AB
 P 780.457.1956
 F 780.457.1983
 E Csiemens@bedrockhomes.ca

Showhome Hours: Mon - Thurs 3 - 8pm,
 Sat, Sun & Holidays 12 - 5pm



www.bedrockhomes.ca

*Artist rendering and floorplan are not exactly as shown. Refer to blueprints for exact representation of spec home.