

The Carlton B

2160 SQ FT

6020 Schonsee Way NW



Schonsee Showhome

7858-170A Ave, Edmonton AB

780.457.1956

schonseesales@bedrockhomes.ca

Job # SCH-0-032232 Lot 44, Block 2

- Legacy Specifications
- Two storey, 3 bedroom, 2.5 bath family home with a large bonus room
- 9' ceilings on the main floor
- Granite countertops and tile backsplash in kitchen
- 41" tall kitchen cabinets with a raised cabinet over the range and the fridge
- Large island with raised eating bar and pendent lighting
- Stainless steel hood fan
- Hardwood and ceramic tile throughout the main floor and ceramic tile in 2nd floor bathrooms.
- Sidewall fireplace with TV niche above
- Maple railings with metal spindles throughout the main and second floor
- Master bedroom with a walk-in closet and 4 piece ensuite, including a large soaker tub and 5' shower
- Spacious second and third bedrooms
- High efficiency furnace and 50 gal hot water tank
- 3 piece rough in basement ideal for future development
- Oversized low E Argon windows and 8 ft patio doors.
- 2 car front attached garage (21' x 22') insulated and dry walled

Notes:

bedrockhomes.ca

VISIT US AT ANY OF OUR SHOWHOMES MON TO THURS 3 - 8PM, WEEKENDS & HOLIDAYS 12 - 5PM



The Carlton B

2160 SQ FT

6020 Schonsee Way NW



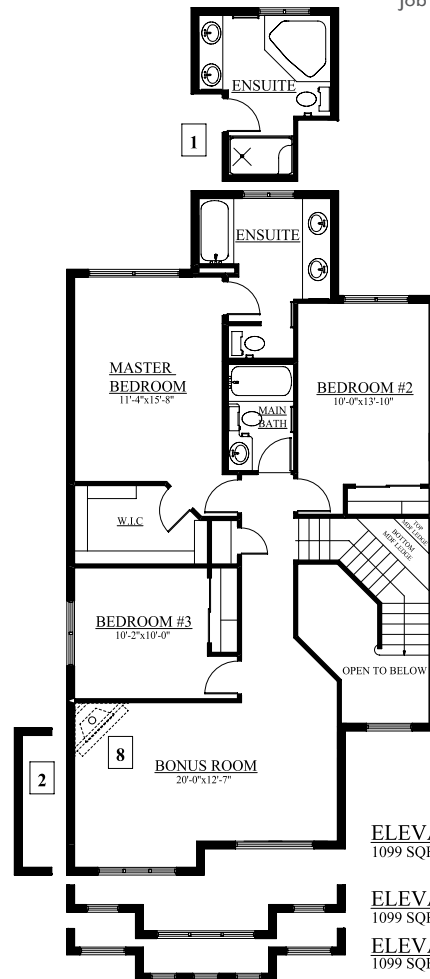
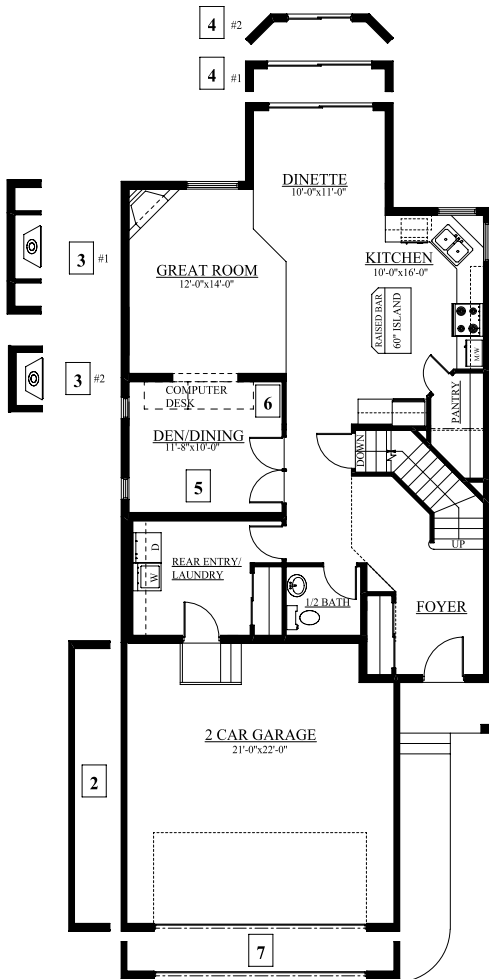
Schonsee Showhome

7858-170A Ave, Edmonton AB

780.457.1956

schonseesales@bedrockhomes.ca

Job # SCH-0-032232 Lot 44, Block 2



ELEVATION A
1099 SQFT

ELEVATION B
1099 SQFT

ELEVATION C
1099 SQFT

bedrockhomes.ca

VISIT US AT ANY OF OUR SHOWHOMES MON TO THURS 3 - 8PM, WEEKENDS & HOLIDAYS 12 - 5PM

