

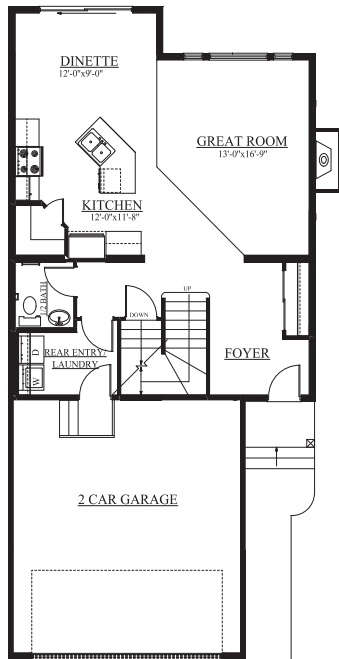


Job: SCH-0-032238 - Lot 50, Block 2, Plan 112 0832

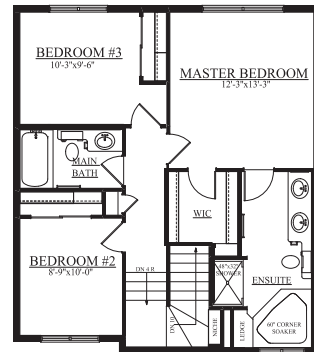
THE VAUGHN A - 1526 SQ FT

6032 Schonsee Way NW
Two-Storey

- Large, bright front entry
- Chocolate laminate in the front entry, main hall, 1/2 bath, kitchen, dinette and great room
- Limestone Coal Ceramic tile in the laundry/rear entry, main bath and ensuite
- Second floor carpet is Shaw Sweet Something in Satin Bark
- Cozy gas sidewall fireplace in the great room with TV niche above
- Kitchen has upgraded tile backsplash, stainless steel hood fan and a large island with a flush eating bar. Cabinets are Thermofoil Espresso Cortina and the countertop is Almond Leather laminate
- Oversized, low E windows and 6 ft. patio door
- Four piece ensuite features large corner soaker tub, double sinks, low flush toilet and a 48" shower
- Stone on garage corners and front post for increased curb appeal
- 2 car front attached garage (20' x 22') insulated, drywalled and firetaped
- Upgraded Classic III Specification



MAIN FLOOR
819 SQ FT



SECOND FLOOR
707 SQ FT

NOTES: _____

PRICE: _____

POSSESSION DATE: _____

Carmen Siemens - Area Manager
A 7858-170 A Ave, Edmonton AB
P 780.457.1956
F 780.457.1983
E csiemens@bedrockhomes.ca

Showhome Hours: Mon - Thurs 3 - 8pm,
Sat, Sun & Holidays 12 - 5pm



www.bedrockhomes.ca

*Artist rendering and floorplan are not exactly as shown. Refer to blueprints for exact representation of spec home. This feature sheet is published by Bedrock Homes Ltd. Floorplans, specifications, home highlights, and dimensions shown are approximate and are subject to change without notice. All rights reserved, including the right of reproduction in whole or in part.