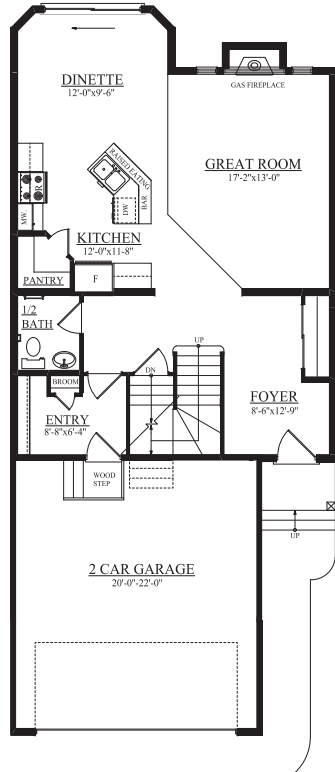




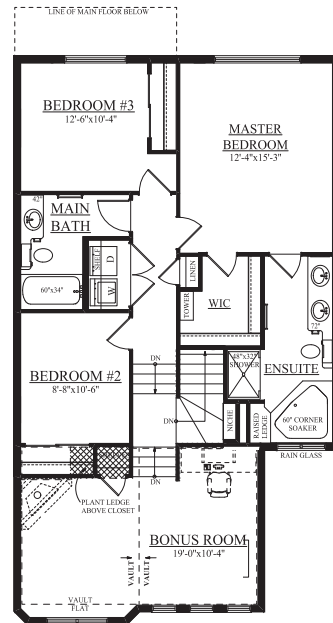
THE MADISON B - 1935 SQ FT

6030 Schonsee Way NW
Two-Storey

Job: SCH-0-032237 Lot 49, Block 2, Plan 112 0832



MAIN FLOOR
903 SQ FT



SECOND FLOOR
1032 SQ FT

- Large, bright front entry with glass in the front door to let in natural light
- Chocolate laminate in the main hall, 1/2 bath, kitchen, dinette and great room
- Limestone Coal ceramic tile in the front entry, rear entry, second floor laundry, main bath and ensuite
- Railing on the main floor painted to match trim
- Cozy gas fireplace on the rear wall of the great room
- 2 foot bay out added to the dinette with 22 sq ft of extra space
- Kitchen has upgraded tile back splash, stainless steel hood fan, large island and walk-in pantry
- Oversized, low E windows and 6 ft. patio door
- Master bedroom features four piece ensuite with large corner soaker tub, double sinks, low flush toilet and 4 foot shower
- Stone on garage corners and front post to add curb appeal
- 2 car front attached garage (20' x 22') insulated, drywalled and fire taped
- Vaulted ceiling in bonus room
- Upgraded Classic III Specification

NOTES: _____

PRICE: _____

POSSESSION DATE: _____

Carmen Siemens - Area Manager
A 7858-170 A Ave, Edmonton AB
P 780.457.1956
F 780.457.1983
E csiemens@bedrockhomes.ca

Showhome Hours: Mon - Thurs 3 - 8pm,
Sat, Sun & Holidays 12 - 5pm



www.bedrockhomes.ca

*Artist rendering and floorplan are not exactly as shown. Refer to blueprints for exact representation of spec home. This feature sheet is published by Bedrock Homes Ltd. Floorplans, specifications, home highlights, and dimensions shown are approximate and are subject to change without notice. All rights reserved, including the right of reproduction in whole or in part.