

The Montana B SHOWHOME

2225 SQ FT

7854 170A Ave



- Two storey, 3 bedroom plus den, 2.5 bath family home with a large bonus room
- Cabinets include raised cabinet over the range and the fridge as well as a bank of pot and pan drawers
- Large island with raised eating bar
- 5 appliances included: Black 22 cu ft side by side fridge, dishwasher and ceran top stove and a white washer and dryer
- Hardwood and ceramic tile throughout the main floor and ceramic tile in the 2nd floor bathrooms and laundry room
- Maple railings with metal spindles throughout the main and second floor
- Master bedroom with a large closet and 4 piece ensuite, including a large corner soaker tub and 5' shower
- Spacious second and third bedrooms
- High efficiency furnace and hot water tank
- 3 piece rough-in in basement ideal for future development
- Oversized low E Argon windows and 8 ft patio doors.
- 2 car front attached garage (20' x 20') insulated and dry walled
- Fully landscaped
- 12' x 14' Pressure Treated Deck
- Air conditioning
- Window coverings
- Security system
- *Showhome can be purchased with or without furnishings

Schonsee Showhome

7858-170A Ave, Edmonton AB

780.457.1956

schonseesales@bedrockhomes.ca

Job # SCH-0-031318 Lot 18, Block 3

Notes:

bedrockhomes.ca

VISIT US AT ANY OF OUR SHOWHOMES MON TO THURS 3 - 8PM, WEEKENDS & HOLIDAYS 12 - 5PM



The Montana B SHOWHOME

2225 SQ FT
7854 170A Ave

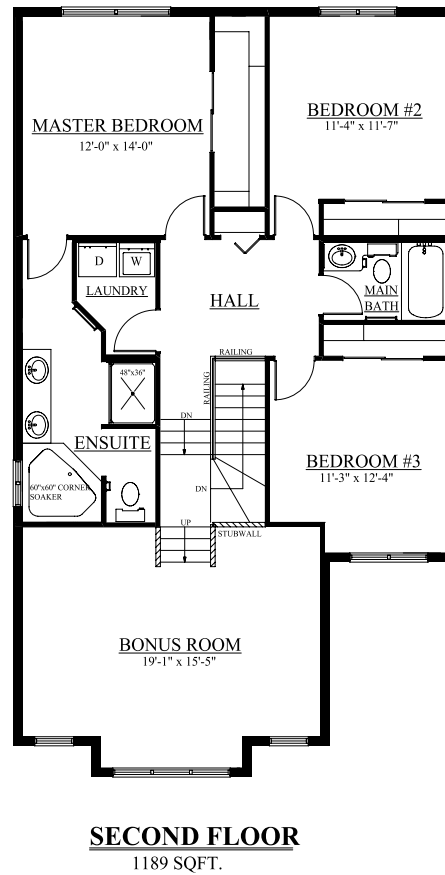
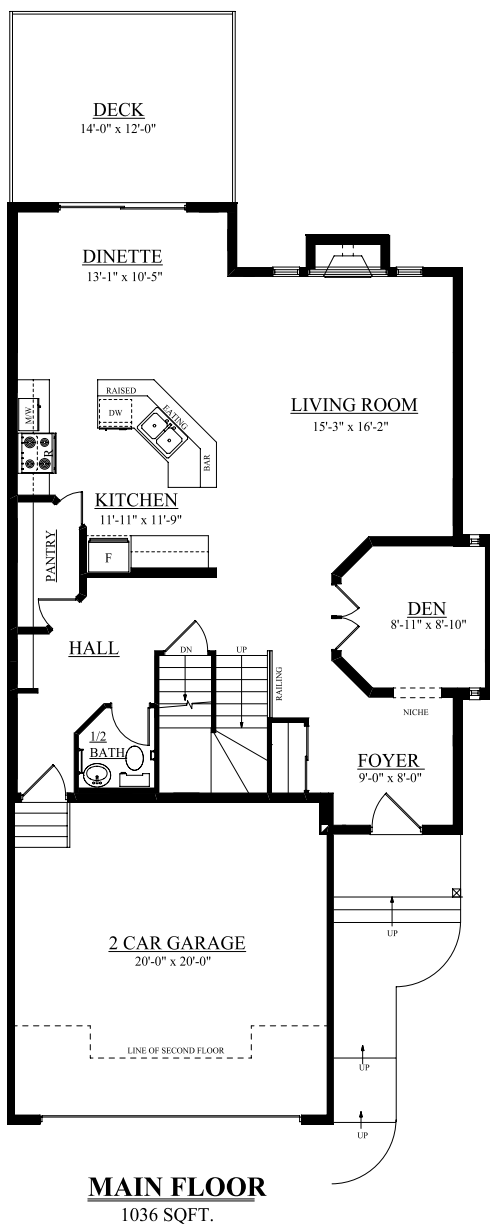


Schonsee Showhome

7858-170A Ave, Edmonton AB
780.457.1956

schonseesales@bedrockhomes.ca

Job # SCH-0-031318 Lot 18, Block 3



bedrockhomes.ca

VISIT US AT ANY OF OUR SHOWHOMES MON TO THURS 3 - 8PM, WEEKENDS & HOLIDAYS 12 - 5PM

