

# The Madison B SHOWHOME

1820 SQ FT

7858 170A Ave



## Schonsee Showhome

7858-170A Ave, Edmonton AB

780.457.1956

[schonseesales@bedrockhomes.ca](mailto:schonseesales@bedrockhomes.ca)

Job # SCH-0-031317 Lot 17, Block 3

- Two storey, 3 bedroom, 2.5 bath family home with a large bonus room
- Kitchen includes a bank of pot and pan drawers and a large island with a raised eating bar
- 5 appliances included: Stainless steel side fridge, dishwasher and ceran top stove; and a white washer and dryer
- Hardwood throughout the main floor with lino in the rear entry/laundry room
- Railings throughout the main and second floor
- Master bedroom with a large walk in closet and 4 piece ensuite
- Vaulted ceiling in the bonus room
- High efficiency furnace and hot water tank
- 3 piece rough-in in basement ideal for future development
- Oversized low E Argon windows and 8 ft patio doors.
- 2 car front attached garage (20' x 21') insulated and dry walled
- Fully landscaped
- 12' x 12' Pressure Treated Deck
- Air conditioning
- Window coverings
- Security system

\*Showhome can be purchased with or without furnishings

Notes:

---

---

---

[bedrockhomes.ca](http://bedrockhomes.ca)

VISIT US AT ANY OF OUR SHOWHOMES MON TO THURS 3 - 8PM, WEEKENDS & HOLIDAYS 12 - 5PM



# The Madison B SHOWHOME

1820 SQ FT  
7858 170A Ave

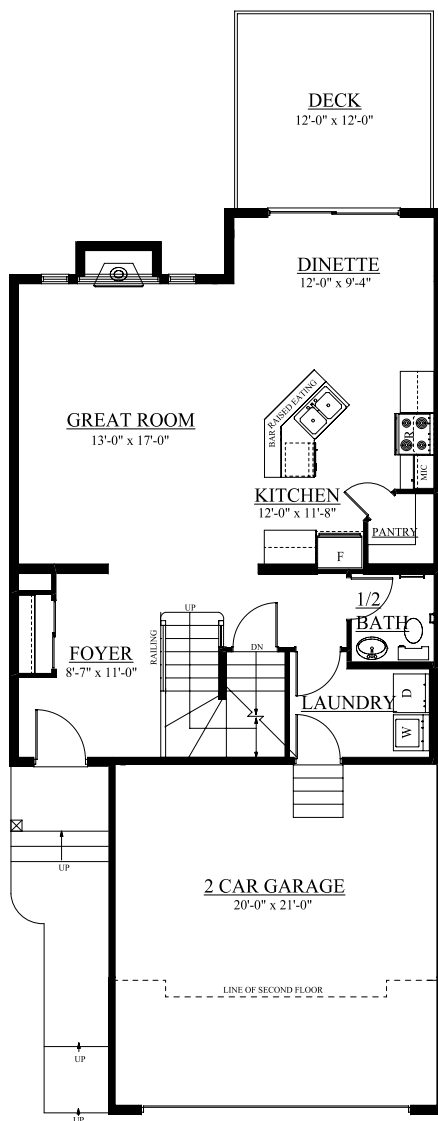


## Schonsee Showhome

7858-170A Ave, Edmonton AB  
780.457.1956

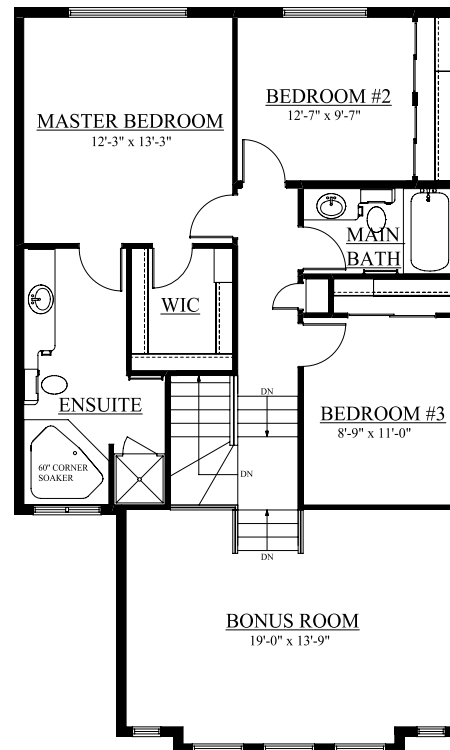
[schonseesales@bedrockhomes.ca](mailto:schonseesales@bedrockhomes.ca)

Job # SCH-0-031317 Lot 17, Block 3



### MAIN FLOOR

829 SQFT.



### SECOND FLOOR

991 SQFT.

[bedrockhomes.ca](http://bedrockhomes.ca)

VISIT US AT ANY OF OUR SHOWHOMES MON TO THURS 3 - 8PM, WEEKENDS & HOLIDAYS 12 - 5PM

