

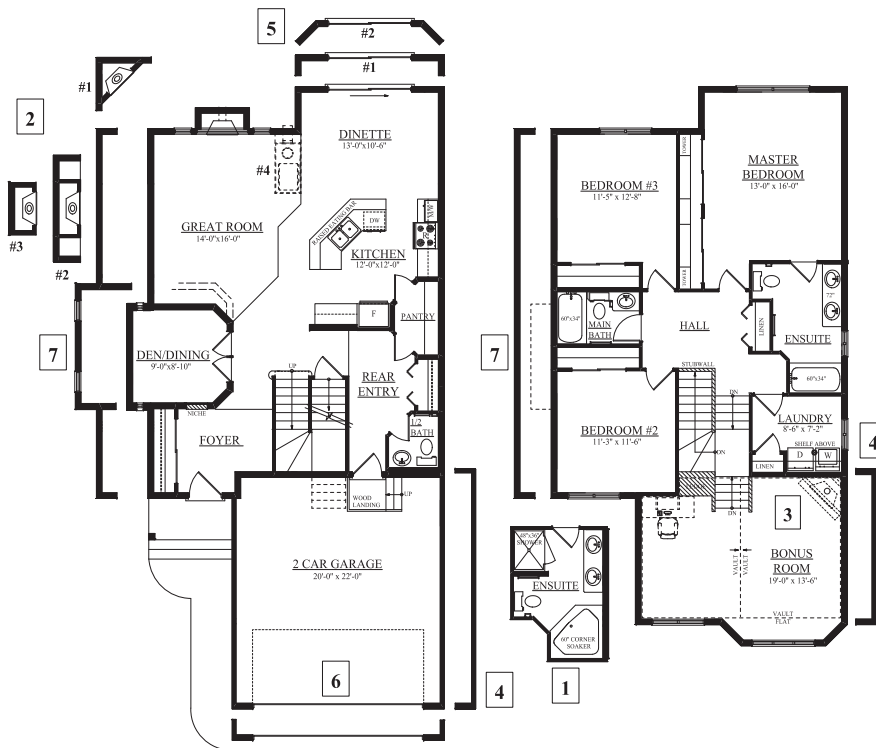


Job # WND-0-032049, Lot 3, Block 8, Plan 092-6441

THE MONTANA C - 2283 SQ FT

3407 West Landing Two-Storey

- An elegant entry with upgraded maple (stained to match the hardwood) welcomes you to this warm home.
- Tile flooring in the front foyer, back entry, kitchen, dinette, pantry, 2nd floor laundry closet and all bathrooms.
- Hardwood flooring through your great room and den is a great addition to your interior.
- Inviting master bedroom features lots of natural light, large walk-in closet and 4 piece ensuite complete with: large corner soaker tub, double sink, low flush toilet and 4' shower.
- 1 1/4" granite countertop, maple cabinets, pot lights on a dimmer switch, walk-in pantry, and island complete with pendant lighting and raised eating bar highlight this kitchen.
- Oversized/low E windows and 8 ft. patio door provide ample natural light.
- High efficiency furnace and 50 gal hot water tank.
- 2 car front attached garage (20' x 22') insulated and dry walled.



MAIN FLOOR
1027 Sq Ft

SECOND FLOOR
1256 Sq Ft

A 3257 Whitelaw Dr, Edmonton AB
 P 780.761.2211
 F 780.756.2065
 E windermeresales@bedrockhomes.ca

Showhome Hours: Mon - Thurs 3 - 8pm,
 Sat, Sun & Holidays 12 - 5pm



This feature sheet is published by Bedrock Homes Ltd. Floorplans, specifications, home highlights, and dimensions shown are approximate and are subject to change without notice. Error and omissions exempt. All rights reserved, including the right of reproduction in whole or in part.