

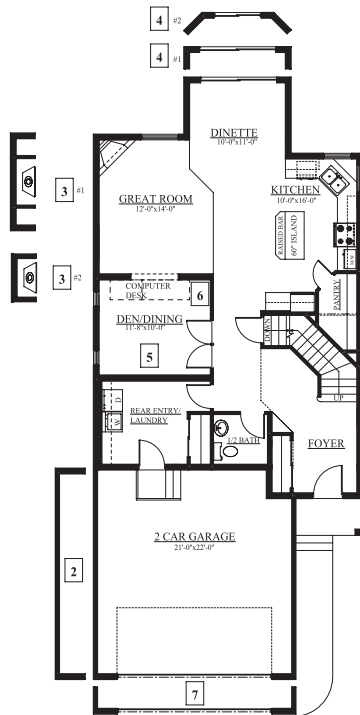


Job # WND-0-032051 Lot 5, Block 8, Plan 092-6441

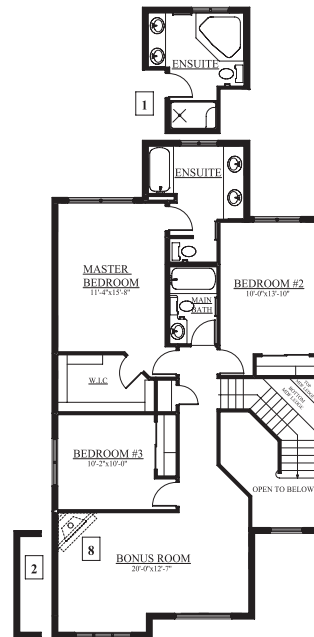
# THE CARLTON C - 2182 SQ FT

## 3411 West Landing Two-Storey

- A warm front entry with upgraded maple (stained to match the hardwood) with metal spindles both welcomes and leads to your second floor.
- Tile flooring right through your front foyer, back entrance, laundry and all bathrooms adds subtle elegance to your home.
- Hardwood flooring through your great room, kitchen, pantry, dinette and hall are great additions to your interior.
- 1 1/4" granite countertops, maple cabinets, pot lights on a dimmer switch, walk-in pantry, and island complete with pendant lighting and raised eating bar highlight this kitchen.
- Oversized/low E windows and 8 ft. patio door provide ample natural light.
- High efficiency furnace and 50 gal hot water tank.
- 2 car front attached garage (20' x 22') insulated and dry walled.



**MAIN FLOOR PLAN**  
1061 Sq Ft



**SECOND FLOOR PLAN**  
1121 Sq Ft

This feature sheet is published by Bedrock Homes Ltd. Floorplans, specifications, home highlights, and dimensions shown are approximate and are subject to change without notice. Error and omissions exempt. All rights reserved, including the right of reproduction in whole or in part.

JUNE 2010

A 3257 Whitelaw Dr, Edmonton AB  
P 780.761.2211  
F 780.756.2065  
E [windermeresales@bedrockhomes.ca](mailto:windermeresales@bedrockhomes.ca)

Showhome Hours: Mon - Thurs 3 - 8pm,  
Sat, Sun & Holidays 12 - 5pm

