

The Madison C

1926 SQ FT

3306 West Court NW



Windermere North Showhome

3257 Whitelaw Dr, Edmonton, AB

780.761.2211

windermereales@bedrockhomes.ca

Job # WND-0-032056 Lot 27, Block 8, Plan 0926441

- 1926 Sq. Ft.
- Two storey, 3 bedroom, 2.5 bath family home with a large bonus room
- 9' ceilings on the main floor
- Granite countertops and tile backsplash in kitchen
- Ample cupboard space with pots and pan drawer and corner pantry in kitchen
- Raised cabinet over the range and the fridge
- Large island with raised eating bar and pendent lighting
- Hardwood throughout the main floor and ceramic tile in back entry and the 2nd floor bathrooms
- Cantilevered fireplace with TV niche in Great Room
- Maple railings with metal spindles throughout the main and second floor
- Second floor laundry
- Master bedroom with a walk-in closet and 4 piece ensuite, including a large corner soaker tub 5' shower and double sinks
- Spacious second and third bedrooms
- Vaulted ceiling in bonus room
- High efficiency furnace and 50 gal hot water tank
- 3 piece rough in basement ideal for future development
- 2 car front attached garage (20' x 22') insulated and dry walled

Notes:

bedrockhomes.ca

VISIT US AT ANY OF OUR SHOWHOMES MON TO THURS 3 - 8PM, WEEKENDS & HOLIDAYS 12 - 5PM



The Madison C

1926 SQ FT

3306 West Court NW



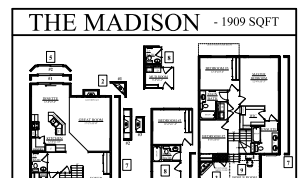
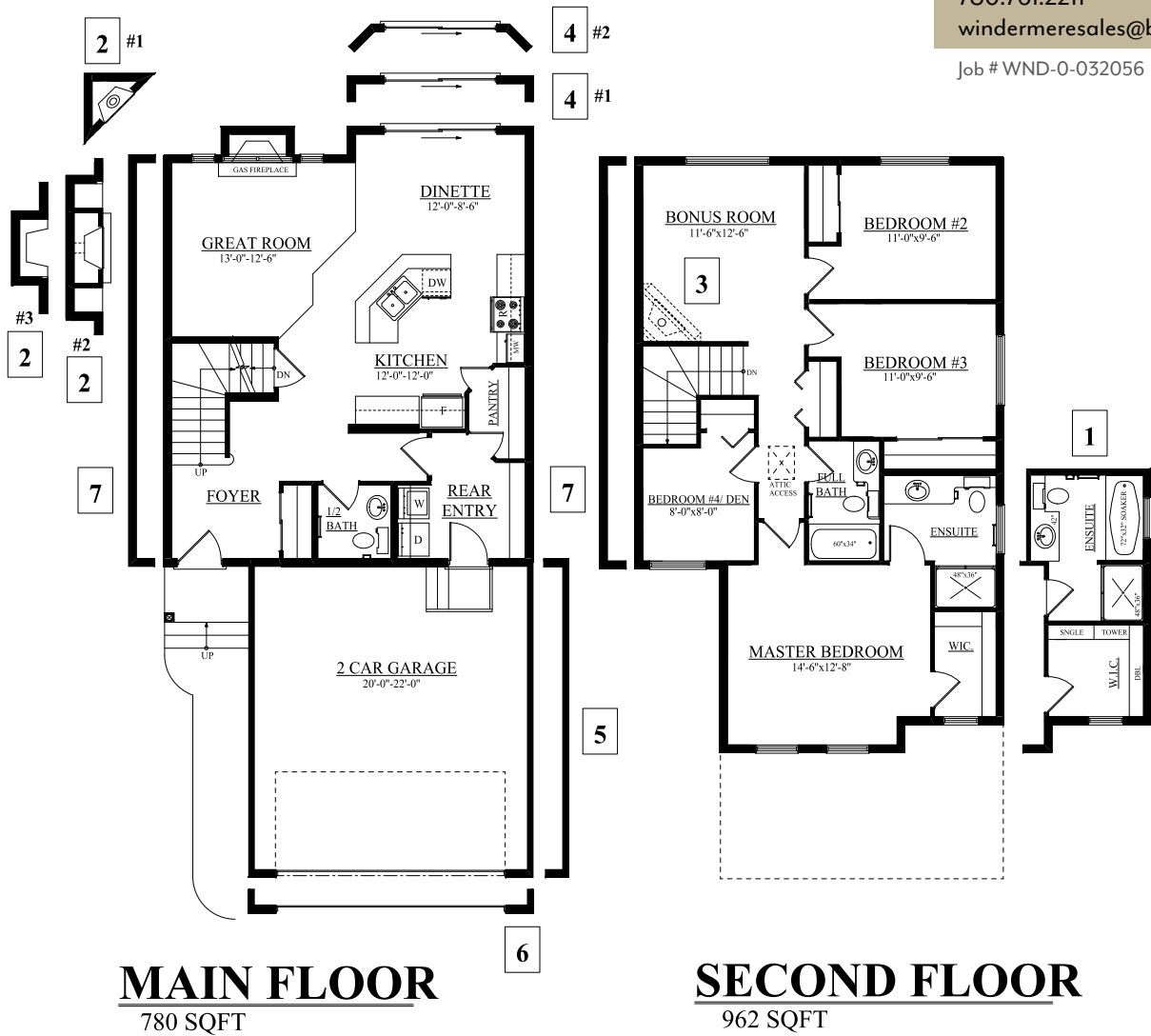
Windermere North Showhome

3257 Whitelaw Dr, Edmonton, AB

780.761.2211

windermereales@bedrockhomes.ca

Job # WND-0-032056 Lot 27, Block 8, Plan 0926441



bedrockhomes.ca

VISIT US AT ANY OF OUR SHOWHOMES MON TO THURS 3 - 8PM, WEEKENDS & HOLIDAYS 12 - 5PM