

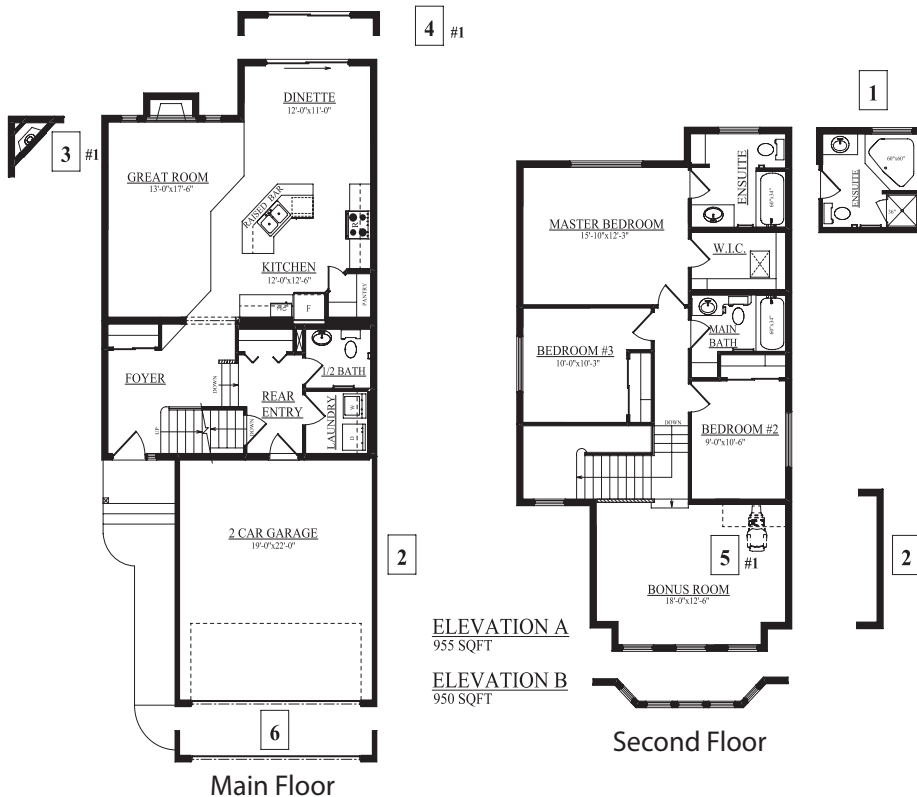


Job # SUN 1424- Lot 66, Block 5, Plan 062-5854

THE WALLACE - 1890 SQ FT

88 Snowbird Crescent Two-Storey

- Inviting front entry with open to above.
- Laminate flooring combined with upgraded carpet
- Fireplace upgraded to side wall with shelves.
- Includes 5 piece black appliance package (large capacity dishwasher, self clean range, 18 cu. Ft. fridge, white washer and dryer included)
- Kitchen also includes a large island with raised eating bar, pots and pan drawers and walk-in pantry.
- Tile backsplash
- Master bedroom features walk-in closet and 4 piece ensuite with corner soaker tub and a 36" shower.
- 2' added to garage width includes reinforcement beam.
- Bonus room widened full width of garage.
- Low E windows.
- High efficiency Furnace and 50gal Hot water tank.
- 2 car front attached garage with Stockton windows and exterior pot lights.
- 4' high stone add to garage with 2' returns.
- Rear Deck
- Air Conditioning Unit



Lorna Gilroy - Area Manager
 A 88 Snowbird Cres, Leduc AB
 P 780.980.8528
 F 780.980.8529
 E lgilroy@bedrockhomes.ca

Showhome Hours: Mon - Thurs 3 - 8pm,
 Sat, Sun & Holidays 12 - 5pm



*Artist rendering and floorplan are not exactly as shown. Refer to blueprints for exact representation of spec home.