

The Madison B

1913 SQ FT

147 Selkirk Place



- Warm Front Entry with Upgraded Maple Railing with Short Diamond Twisted Pewter Spindles Leading to Second Floor
- Garage Entry Features A spacious Mud Room with Storage
- Main Floor Features Upgraded Jazz Maple Java Hardwood Flooring
- Upgraded Sol Northstar Limestone light Ceramic Tile in Front Foyer, Back Entrance, Convenient 2nd Floor Laundry, Main Bath and Ensuite
- Plenty of space on a Granite Venetian Gold Countertop, Maple Cappuccino Cabinets, Stainless Steel Hood fan, Corner Pantry, Pots & Pans Drawer, Upgraded 45° Tile Backsplash and a Large Chef's Island Highlight the Spacious Kitchen
- Brushed Chrome Lighting package throughout
- Great Room complete with Sidewall Cantilevered Gas Fireplace and TV niche provides a beautiful focal point and allows for improved room functionality
- Shaw Quite Simple Biscuit 36oz Carpet in Bedrooms and Bonus Room
- Master Bedroom offers plenty of space with a Large Walk-In Closet and 5 Piece Ensuite, Complete With: Large Corner Soaker Tub, Double Sinks, Low Flush Toilet and Extended Shower with Seat
- Insulated and Drywalled two Car Front Attached Garage (20'X22')
- Black River Stacked Stone decorative stone work to half height on Front Post and Garage corners add stylish detail and curb appeal
- East Facing Backyard Lot Area 419.5 Sq M
- Built to Bedrocks Superior Legacy Specifications

Suntree Showhome

13 Selkirk Place, Leduc AB

780.980.8528

suntreesales@bedrockhomes.ca

Job # SUN 0-032397 Lot 17, Block 10, Plan 072-7011

Notes:

bedrockhomes.ca

VISIT US AT ANY OF OUR SHOWHOMES MON TO THURS 3 - 8PM, WEEKENDS & HOLIDAYS 12 - 5PM



The Madison B

1913 SQ FT

147 Selkirk Place



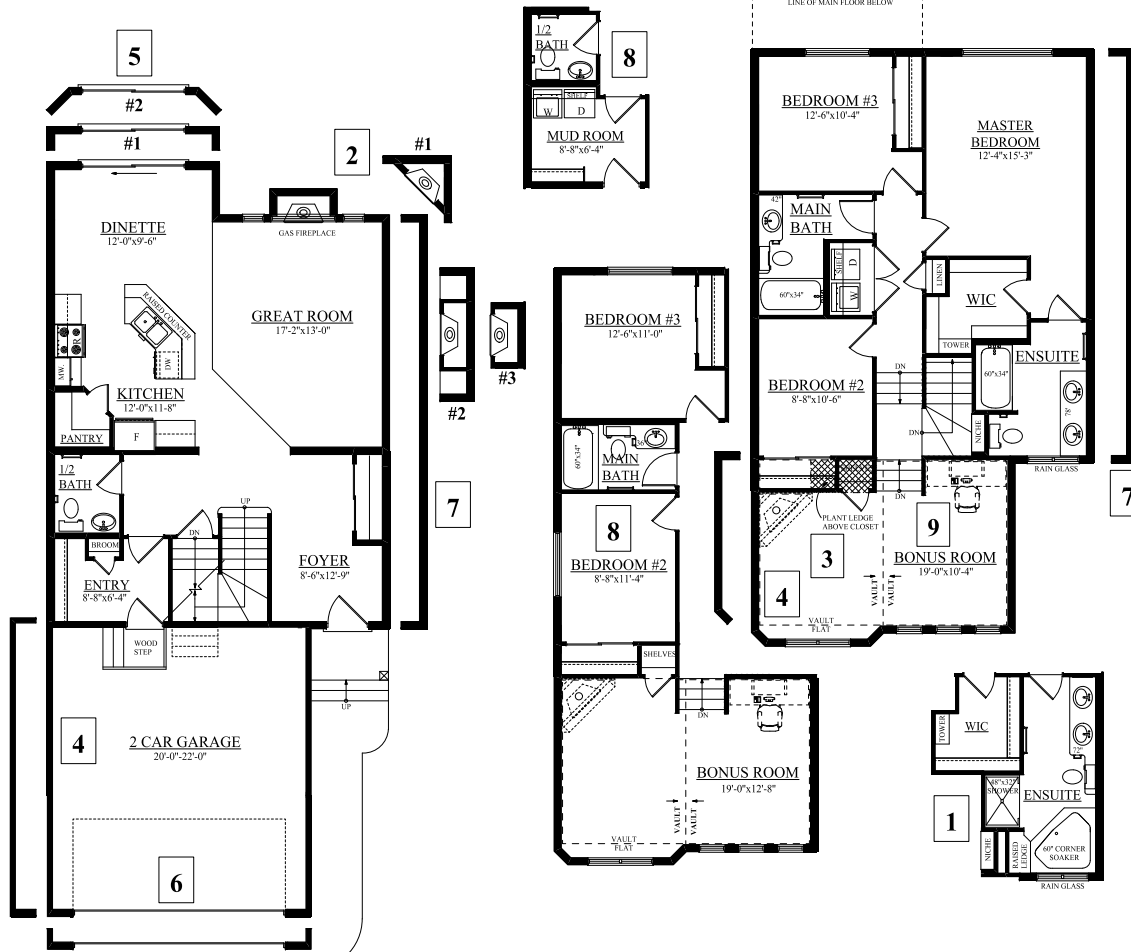
Suntree Showhome

13 Selkirk Place, Leduc AB

780.980.8528

suntreesales@bedrockhomes.ca

Job # SUN 0-032397 Lot 17, Block 10, Plan 072-7011



MAIN FLOOR

881 SQFT

SECOND FLOOR

1028 SQFT

bedrockhomes.ca

VISIT US AT ANY OF OUR SHOWHOMES MON TO THURS 3 - 8PM, WEEKENDS & HOLIDAYS 12 - 5PM

