

The Bailey A

1752 SQ FT

151 Selkirk Place



- Welcoming Front Entry leads to Open Concept main floor ideal for family time or entertaining guests
- Garage Entry features Main Floor Laundry, ample storage and access to the Kitchen via the Walk-Through Pantry
- Trend Chocolate Planked Laminate in Front Foyer, Main Hall, ½ Bath, Kitchen, Pantry, Dinette, and Great Room
- Upgraded Tierra Sol Hartford Playa Series Taupe Ceramic Tile in Garage Entry/Laundry, Main Bath & Ensuite
- Maple Espresso Cabinets with Crown Mouldings, Upgraded Tile Backsplash and a Large Island with Jamocha Granite colored Laminate Countertops with an Extended Eating Bar highlight the Spacious Kitchen
- Great Room complete with Sidewall Cantilevered Fireplace with TV Niche
- Shaw Sweet Something Satin Bark Carpet in Great Room, Bedrooms and Bonus Room
- A Cozy Bonus Room with Large Picture Window greets you on the second floor and leads to 2 Oversized Bedrooms
- Master Bedroom offers plenty of space with a Walk-In Closet and a 4 Piece Ensuite
- 4th Bedroom is Ideal for a Home Office or Nursery
- 2 Car Front Attached Garage (20'X22') Insulated and Dry-walled
- East Facing Backyard; Lot Area 395.8 Sq M
- Built to Bedrock's value for money Classic III Series Specifications

Suntree Showhome

13 Selkirk Place, Leduc AB

780.980.8528

suntreesales@bedrockhomes.ca

Job # SUN 0-032395 Lot 15, Block 10, Plan 072-7011

Notes:

bedrockhomes.ca

VISIT US AT ANY OF OUR SHOWHOMES MON TO THURS 3 - 8PM, WEEKENDS & HOLIDAYS 12 - 5PM



The Bailey A

1752 SQ FT

151 Selkirk Place



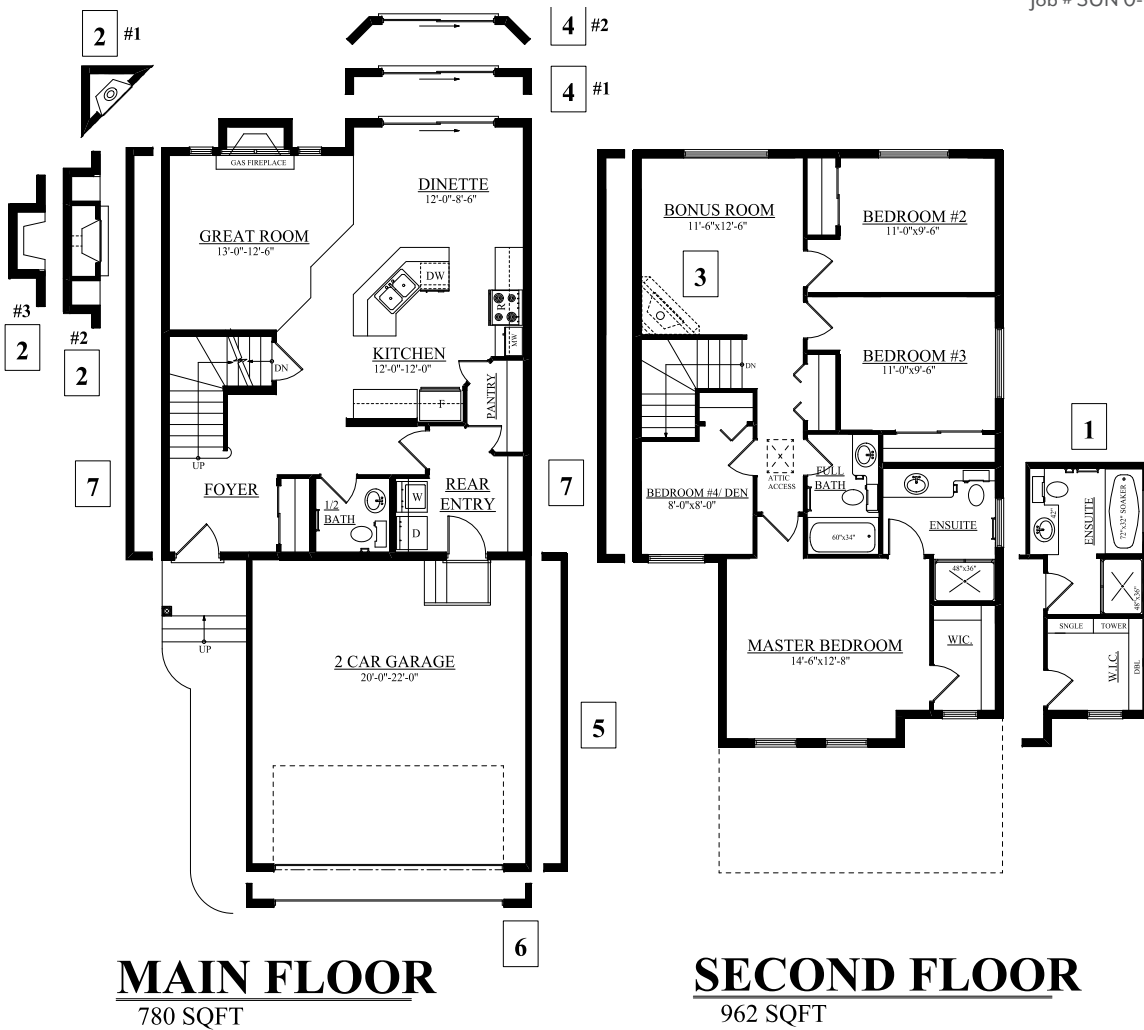
Suntree Showhome

13 Selkirk Place, Leduc AB

780.980.8528

suntreesales@bedrockhomes.ca

Job # SUN 0-032395 Lot 15, Block 10, Plan 072-7011



bedrockhomes.ca

VISIT US AT ANY OF OUR SHOWHOMES MON TO THURS 3 - 8PM, WEEKENDS & HOLIDAYS 12 - 5PM

