

The Madison B

1940 SQ FT

1944 - 67 Street SW



- Two Storey, 3 bedroom, 2.5 bath family home with a large bonus room
- 9' ceilings on the main floor
- Spacious and inviting front entry
- Large U shaped kitchen
- 41" maple cabinets complete with crown molding
- Large island with raised eating bar and pendent lighting
- Hardwood and ceramic tile on main floor
- Cantilevered fireplace and TV niche in great room
- Granite countertops and tile backsplash in kitchen
- Maple railings and upgraded square posts with Victorian Caps
- Master bedroom with walk-in closet and 5 piece ensuite, including large soaker tub and 4' walk in shower
- Vaulted ceilings in bonus room
- High efficiency furnace and 50 gal hot water tank
- 3 piece rough-in in basement ideal for future development
- Oversized, low E Argon windows and 8 ft. patio doors
- 2 car front attached garage (22'X22') insulated and dry-walled

Summerside Showhome

1915-67 Street, Edmonton, AB

780.469.2525

summersidesales@bedrockhomes.ca

Job # SUM-0-032179 Lot 47, Block 41, Plan 102-4792

Notes:

bedrockhomes.ca

VISIT US AT ANY OF OUR SHOWHOMES MON TO THURS 3 - 8PM, WEEKENDS & HOLIDAYS 12 - 5PM



The Madison B

1940 SQ FT

1944 - 67 Street SW



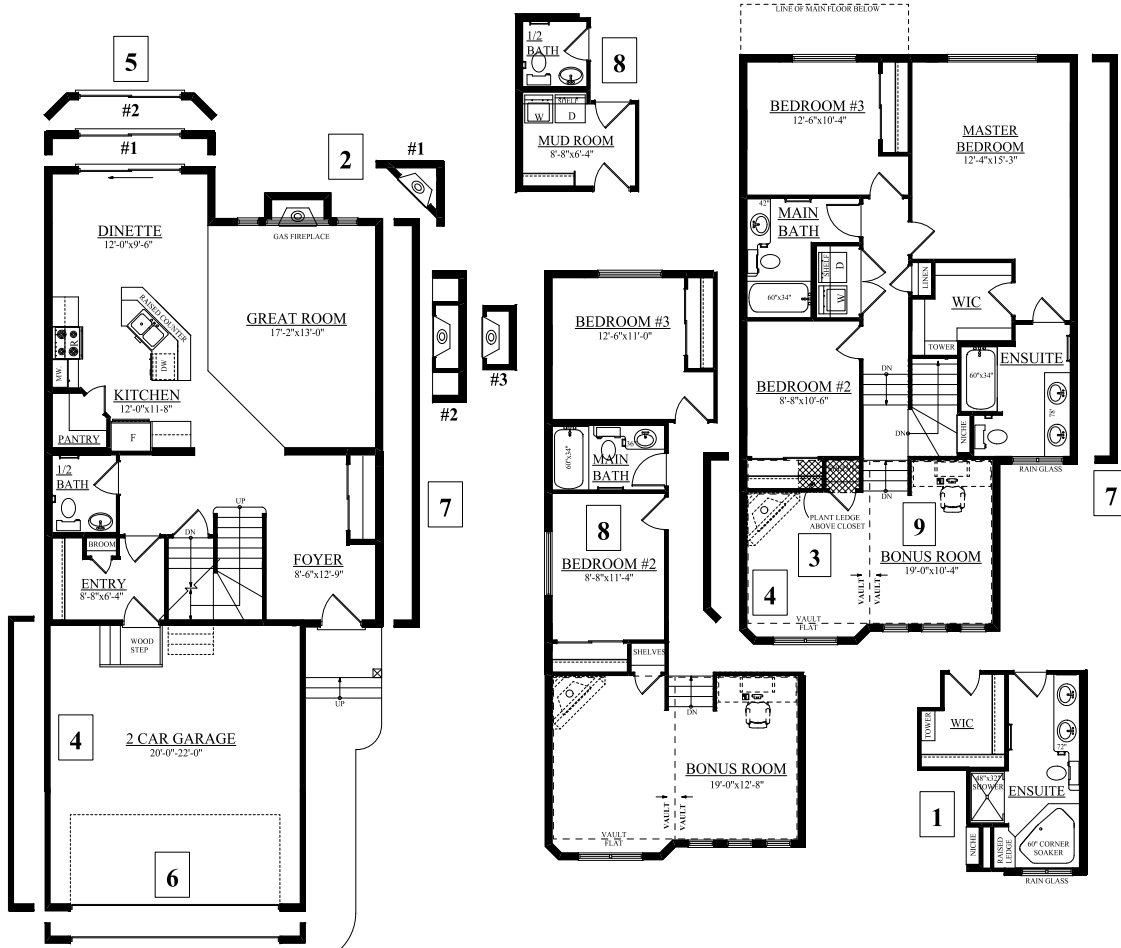
Summerside Showhome

1915-67 Street, Edmonton, AB

780.469.2525

summersidesales@bedrockhomes.ca

Job # SUM-0-032179 Lot 47, Block 41, Plan 102-4792



MAIN FLOOR

881 SQFT

SECOND FLOOR

1028 SQFT

bedrockhomes.ca

VISIT US AT ANY OF OUR SHOWHOMES MON TO THURS 3 - 8PM, WEEKENDS & HOLIDAYS 12 - 5PM

