

The Morrison B

1762 SQ FT

1429 Hays Way NW



- Classic Specifications
- Two Storey, 3 bedroom, 2.5 bath family home with large bonus room with added 2' width
- Large pie shaped lot
- Spacious and inviting front entry
- Ample cupboard space and walk thru pantry in kitchen
- Upgraded cabinets with crown molding
- Laminate and tile flooring on the main floor
- Cantilevered fireplace with TV niche in great room
- Main floor laundry
- Upgrade to paint grade railings including Victorian Caps on the main floor
- Master Bedroom with walk-in closet and 4 piece ensuite including large 6' soaker tub and 4' walk in shower
- Spacious secondary bedrooms
- High efficiency furnace and 50g hot water tank
- 3 piece rough in in basement ideal for future development
- Oversized, low E Argon windows and 6 ft patio doors
- 2 car front attached garage (22'x22') insulated and dry-walled

Hampton Pointe Showhome

1481 Hays Way NW Street, Edmonton, AB
780.756.1038

hamptonpointesales@bedrockhomes.ca

Job # HAM-0-032324 Lot 29, Block 10

Notes:

bedrockhomes.ca

VISIT US AT ANY OF OUR SHOWHOMES MON TO THURS 3 - 8PM, WEEKENDS & HOLIDAYS 12 - 5PM



The Morrison B

1762 SQ FT

1429 Hays Way NW



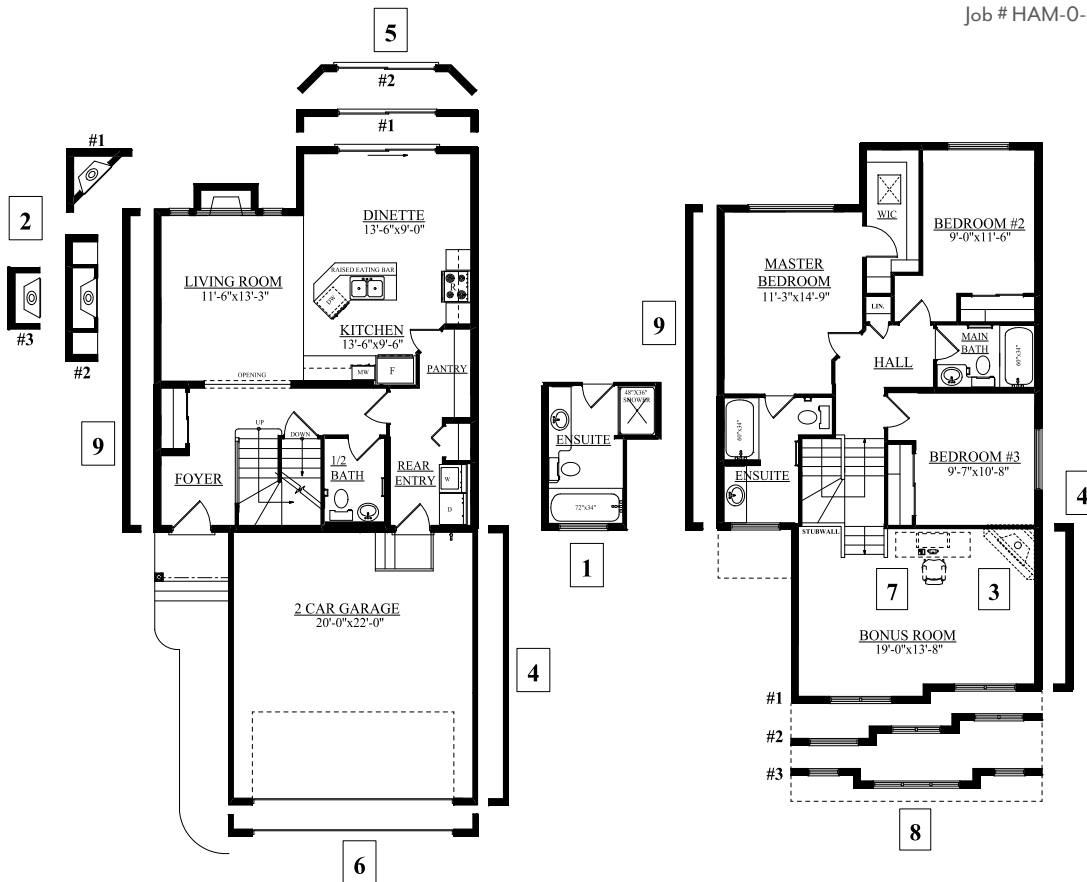
Hampton Pointe Showhome

1481 Hays Way NW Street, Edmonton, AB

780.756.1038

hamptonpointesales@bedrockhomes.ca

Job # HAM-0-032324 Lot 29, Block 10



MAIN FLOOR
760 SQFT

SECOND FLOOR
965 SQFT

- 1 | 4 PIECE ENSUITE
- 4 | 2' EXT. TO GARAGE & BONUS
- 7 | COMPUTER DESK

bedrockhomes.ca

VISIT US AT ANY OF OUR SHOWHOMES MON TO THURS 3 - 8PM, WEEKENDS & HOLIDAYS 12 - 5PM

