

The Conway B

1968 SQ FT

1114 Hays Drive NW



- Two Story, 3 bedroom, 2.5 bath family home with large bonus room with added 2' width
- Spacious and inviting front entry
- Large island with raised eating bar and pendent lighting that seats four
- Ample cupboard space with pots and pans drawers and corner pantry in kitchen
- Granite countertops and tile backsplash in kitchen
- Hardwood and ceramic tile on main floor
- Cantilevered fireplace with TV niche in great room
- Second floor laundry
- Maple railings with metal spindles
- Master Bedroom with double closets and 4 piece ensuite including large 6' soaker tub and 4' walk in shower
- Spacious secondary bedrooms
- Vaulted ceilings in bonus room
- High efficiency furnace and 50g hot water tank
- 3 piece rough-in in basement ideal for future development
- Oversized, low E Argon windows and 8 ft patio doors
- 2 car front attached garage (22'x22') insulated and dry-walled

Hampton Pointe Showhome

1481 Hays Way NW Street, Edmonton, AB

780.756.1038

hamptonpointesales@bedrockhomes.ca

Job # HAM-0-032385 Lot 6, Block 8

Notes:

bedrockhomes.ca

VISIT US AT ANY OF OUR SHOWHOMES MON TO THURS 3 - 8PM, WEEKENDS & HOLIDAYS 12 - 5PM



The Conway B

1968 SQ FT

1114 Hays Drive NW



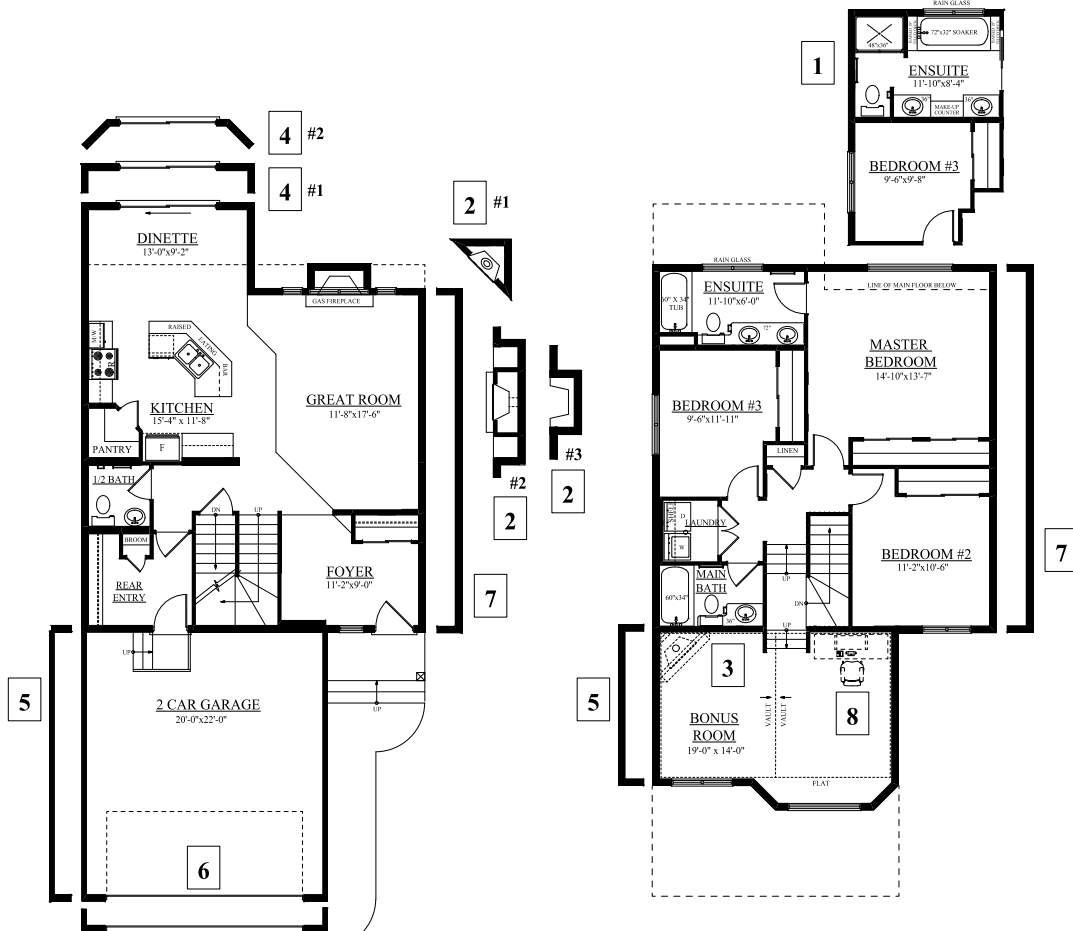
Hampton Pointe Showhome

1481 Hays Way NW Street, Edmonton, AB

780.756.1038

hamptonpointesales@bedrockhomes.ca

Job # HAM-0-032385 Lot 6, Block 8



MAIN FLOOR PLAN
882 SQ.FT.

SECOND FLOOR PLAN
1050 SQ.FT.

bedrockhomes.ca

VISIT US AT ANY OF OUR SHOWHOMES MON TO THURS 3 - 8PM, WEEKENDS & HOLIDAYS 12 - 5PM

