



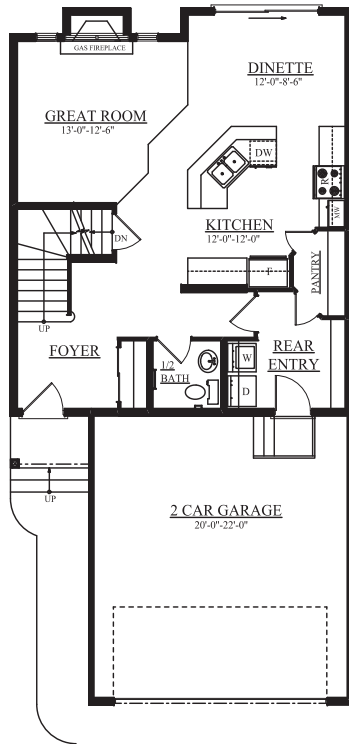
Job # LDV-031243 Lot 23, Block 5, Plan 072-5987

THE BAILEY B - 1734 Sq. Ft.

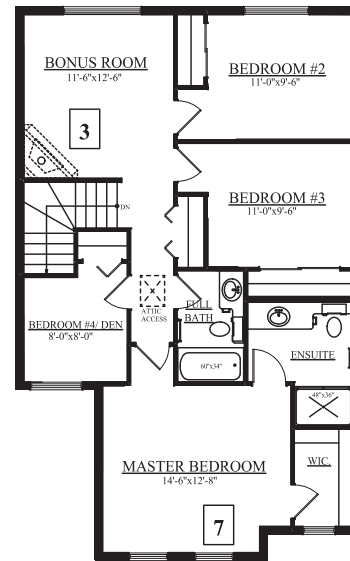
215 Avena Circle

Two-Storey

- Welcoming front entry leads to open concept main floor; ideal for family time or entertaining guests
- Rear entry features; main floor laundry, ample storage and access to the kitchen via the walk-through pantry
- Upgraded laminate in front foyer, main hall, kitchen, pantry, dinette, 1/2 bath and great room
- Upgraded ceramic tile flooring in laundry/rear entrance, main bath and ensuite
- Ample counter space, cabinets, upgraded tile backsplash and a large island with extended eating bar highlight this spacious kitchen
- Great room complete with fireplace offers an inviting place for friends and family
- Carpet in bedrooms and bonus room
- A cozy bonus room with large picture window greets you on the second floor and leads to 2 oversized bedrooms
- Vaulted master bedroom offers plenty of space with a walk-in closet and a practical 3 piece ensuite with 4' shower
- 4th bedroom is ideal for a home office or nursery
- 2 car front attached garage (20'x22') insulated and dry-walled
- East facing backyard; Lot area 374 Sq M
- Classic III Series Specifications



MAIN FLOOR
780 Sq. Ft.



SECOND FLOOR
954 Sq. Ft.

NOTES: _____

PRICE: _____

POSSESSION DATE: _____

A 88 Snowbird Cres, Leduc, AB
 P 780.980.8528
 F 780.980.8529
 E suntreesales@bedrockhomes.ca

Showhome Hours: Mon - Thurs 3 - 8pm,
 Sat, Sun & Holidays 12 - 5pm

