



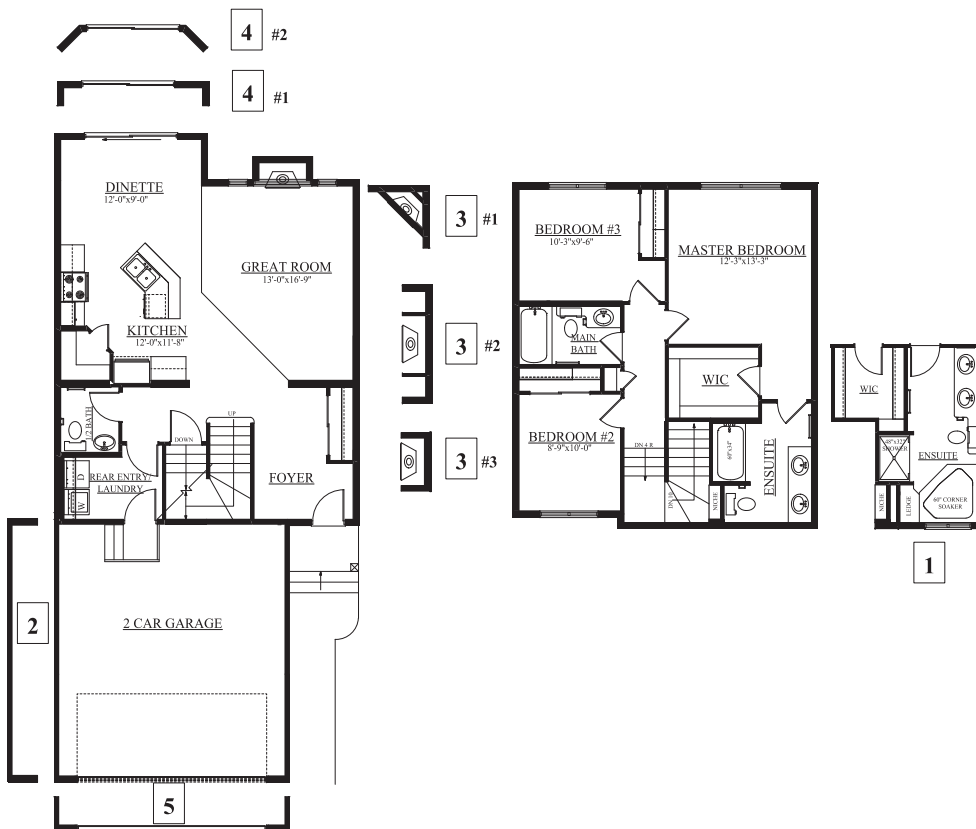
THE VAUGHN A 1526 Sq.Ft

16024 - 138 Street NW

Two-Storey

Job # CAR-0-031489 Lot 31, Block 61, Plan 082-6185

- Welcoming front entry leads to open concept main floor ideal for family living.
- Chocolate laminate flooring in the foyer, main hall, 1/2 bath, kitchen, pantry, dinette and great room complement any decor and are easy to maintain.
- Dark grey ceramic tile in the laundry, back entrance, main bath and ensuite.
- The garage entry features a convenient mud room with main floor laundry.
- Wonderful kitchen for entertaining with Cayenne Cortina coloured cabinets, a corner pantry with a rain glass door, stainless steel hood fan and a large island with a raised eating bar.
- Great room features a cozy gas fireplace with a TV niche and is an inviting place for both friends and family.
- The master bedroom offers plenty of space with a walk-in closet and an upgraded four piece ensuite with 48" wide shower and relaxing corner soaker tub.
- Interior doors are 6 panel colonist style with brushed chrome hardware.
- High efficiency furnace and 40 gal hot water tank are standard in this home.
- 2 car front attached garage (20'x22') insulated and dry walled with automatic door controllers.



MAIN FLOOR PLAN
829 SQFT

SECOND FLOOR PLAN
707 SQFT

NOTES: _____
 PRICE: _____
 POSSESSION DATE: _____

A 16010 - 137 A Street Edmonton AB
 P 780.468.1105
 F 780.472.8467
 E carltonparksales@bedrockhomes.ca

Showhome Hours: Mon - Thurs 3 - 8pm,
 Sat, Sun & Holidays 12 - 5pm

