

The Montana

2258 SQ FT - TWO STOREY



Elevation A



Elevation B



Elevation C



Elevation G

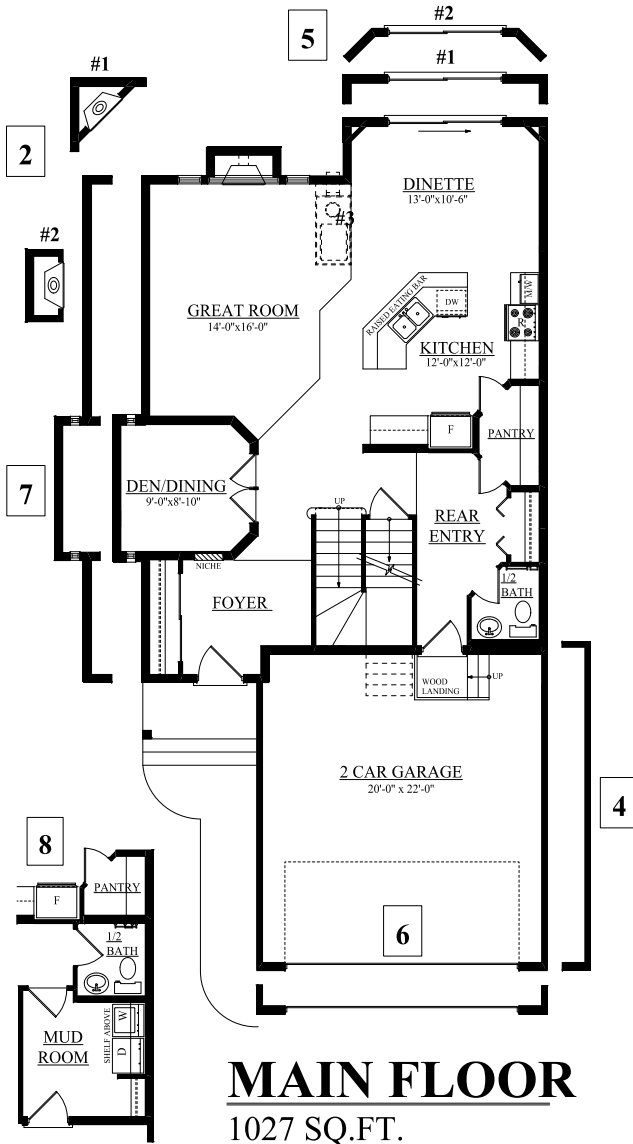
bedrockhomes.ca

VISIT US AT ANY OF OUR SHOWHOMES MON TO THURS 3 - 8PM, WEEKENDS & HOLIDAYS 12 - 5PM

This feature sheet is published by Bedrock Homes Ltd. Floorplans, specifications, home highlights and dimensions shown are approximate and are subject to change without notice. All rights reserved, including the right of reproduction in whole or in part.

The Montana A,B,C ELEV.

2258 SQ FT - TWO STOREY



MAIN FLOOR
1027 SQ.FT.



SECOND FLOOR
1231 SQFT

<p>1 4 PIECE ENSUITE</p> <ul style="list-style-type: none"> - INCLUDES 6'-0" SOAKER TUB - 48" SHOWER - BANJO TOP 	<p>4 2' EXT. TO GARAGE & BONUS</p> <ul style="list-style-type: none"> - 2'-0" ADDED TO WIDTH OF GARAGE & BONUS ROOM - ADDS ~29 SQ.FT. TO SECOND FLOOR 	<p>7 WIDEN HOUSE BY 2'-0"</p> <ul style="list-style-type: none"> - WIDEN HOUSE BY 2'-0" ON EXT. WALL - 140 SQ.FT. TOTAL ADDED TO HOUSE
<p>2 ALTERNATE FIREPLACES</p> <ul style="list-style-type: none"> #1 - CORNER FIREPLACE C/W TV NICHE (-10 SQFT) #2 - CANT. FIRE PLACE #3 - THREE-SIDED FIREPLACE 	<p>5 NOOK ADDITION</p> <ul style="list-style-type: none"> #1 - ADD A 14'-0"x2'-0" BOXOUT TO NOOK (ADDS 28 SQFT) #2 - ADD A 14'-0"x2'-0" BAYOUT TO NOOK (ADDS 25 SQFT) 	<p>8 LAUNDRY TO MAIN & ADD OFFICE</p> <ul style="list-style-type: none"> - LAUNDRY MOVED TO MAIN, OMIT WALK-THRU PANTRY & ADD OFFICE TO SECOND FLOOR
<p>3 BONUS ROOM FIREPLACE</p> <ul style="list-style-type: none"> - ADD CORNER FIREPLACE TO BONUS ROOM 	<p>6 LENGTHEN GARAGE 2'-0"</p> <ul style="list-style-type: none"> - ADDS 2'-0" TO LENGTH OF GARAGE 	<p>9 COMPUTER DESK</p> <ul style="list-style-type: none"> - BUILT IN COMPUTER DESK

Notes:

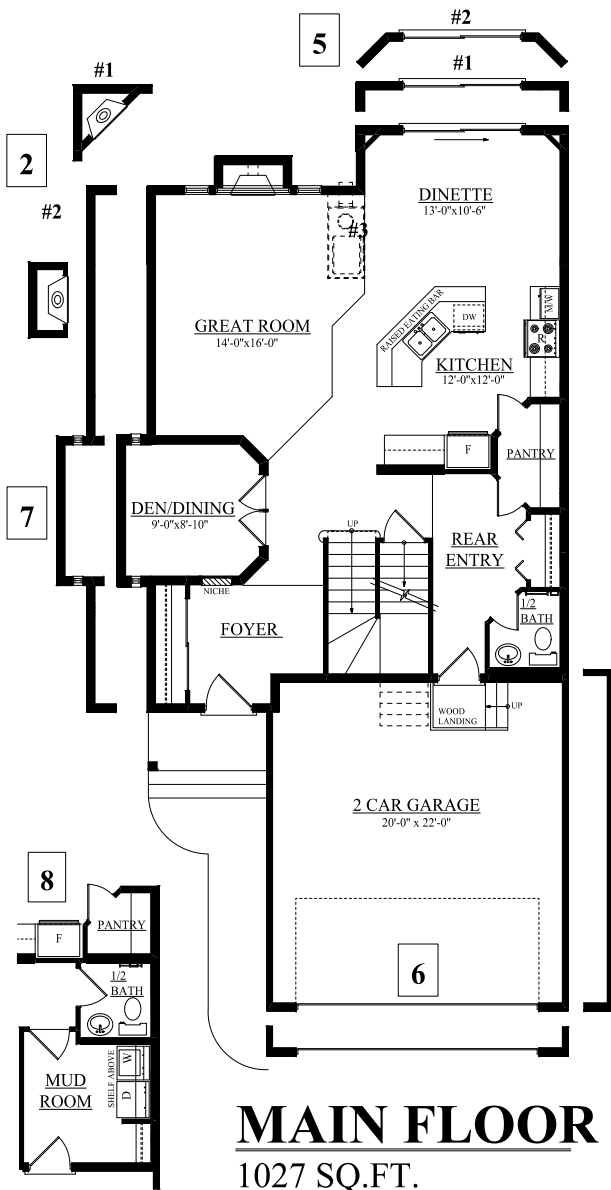
bedrockhomes.ca



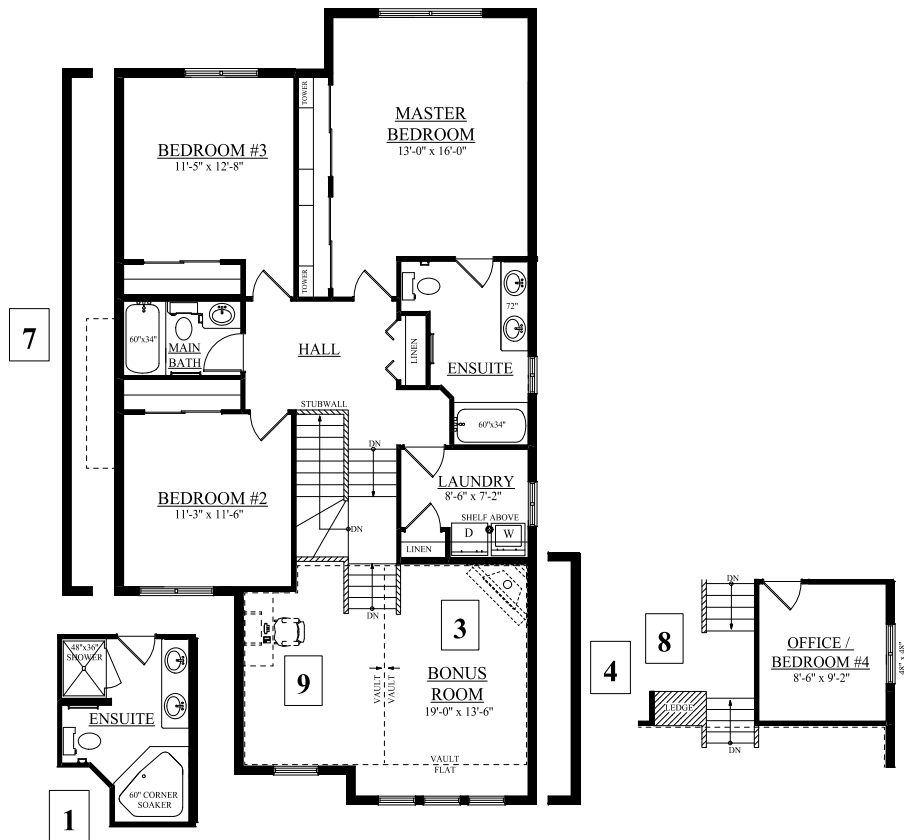
VISIT US AT ANY OF OUR SHOWHOMES MON TO THURS 3 - 8PM, WEEKENDS & HOLIDAYS 12 - 5PM

The Montana G ELEV.

2258 SQ FT - TWO STOREY



MAIN FLOOR
1027 SQ.FT.



SECOND FLOOR
1231 SQFT

1 4 PIECE ENSUITE - INCLUDES 6'-0" SOAKER TUB - 48" SHOWER - BANJO TOP	4 2' EXT. TO GARAGE & BONUS - 2'-0" ADDED TO WIDTH OF GARAGE & BONUS ROOM - ADDS ~29 SQ.FT. TO SECOND FLOOR	7 WIDEN HOUSE BY 2'-0" - WIDEN HOUSE BY 2'-0" ON EXT. WALL - 140 SQ.FT. TOTAL ADDED TO HOUSE
2 ALTERNATE FIREPLACES #1 - CORNER FIREPLACE C/W TV NICHE (-10 SQFT) #2 - CANT. FIRE PLACE #3 - THREE-SIDED FIREPLACE	5 NOOK ADDITION #1 - ADD A 14'-0"x2'-0" BOXOUT TO NOOK (ADDS 28 SQFT) #2 - ADD A 14'-0"x2'-0" BAYOUT TO NOOK (ADDS 25 SQFT)	8 LAUNDRY TO MAIN & ADD OFFICE - LAUNDRY MOVED TO MAIN, OMIT WALK-THRU PANTRY & ADD OFFICE TO SECOND FLOOR
3 BONUS ROOM FIREPLACE - ADD CORNER FIREPLACE TO BONUS ROOM	6 LENGTHEN GARAGE 2'-0" - ADDS 2'-0" TO LENGTH OF GARAGE	9 COMPUTER DESK - BUILT IN COMPUTER DESK

Notes:
