

The Brighton II

TWO STOREY

2173 SQ FT - (3 BDR OPTION)

2375 SQ FT - (4 BDR OPTION)



Elevation A



Elevation B



Elevation C

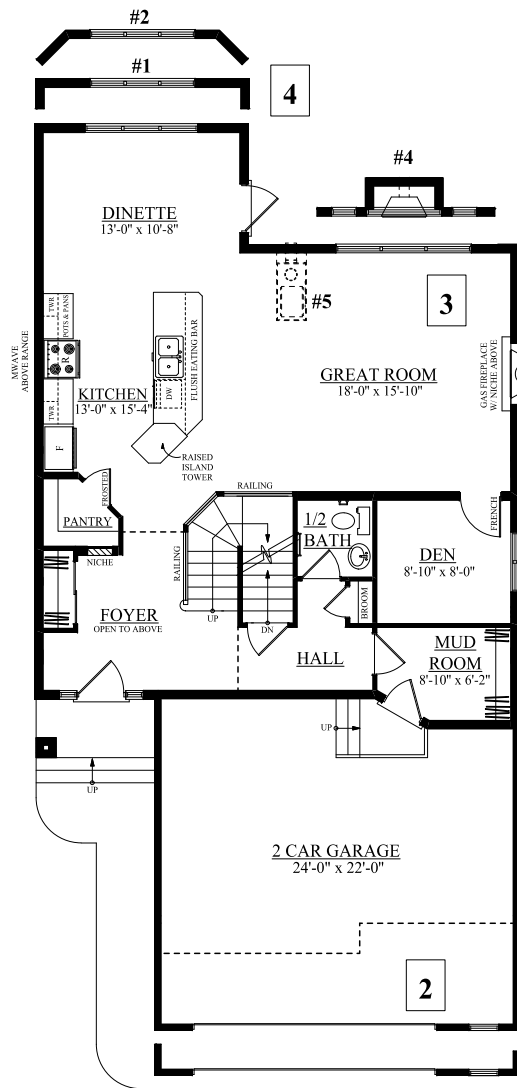
bedrockhomes.ca

VISIT US AT ANY OF OUR SHOWHOMES MON TO THURS 3 - 8PM, WEEKENDS & HOLIDAYS 12 - 5PM

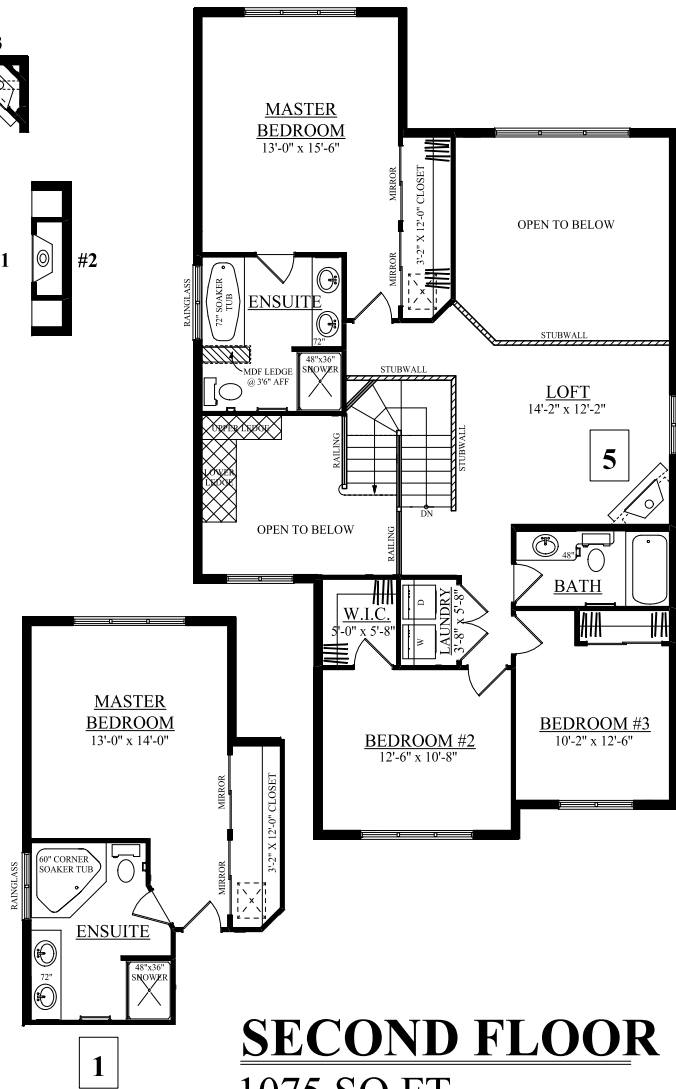
This feature sheet is published by Bedrock Homes Ltd. Floorplans, specifications, home highlights and dimensions shown are approximate and are subject to change without notice. All rights reserved, including the right of reproduction in whole or in part.

The Brighton II

2173 SQ FT - 3 BDR OPTION



MAIN FLOOR
1098 SQ.FT.



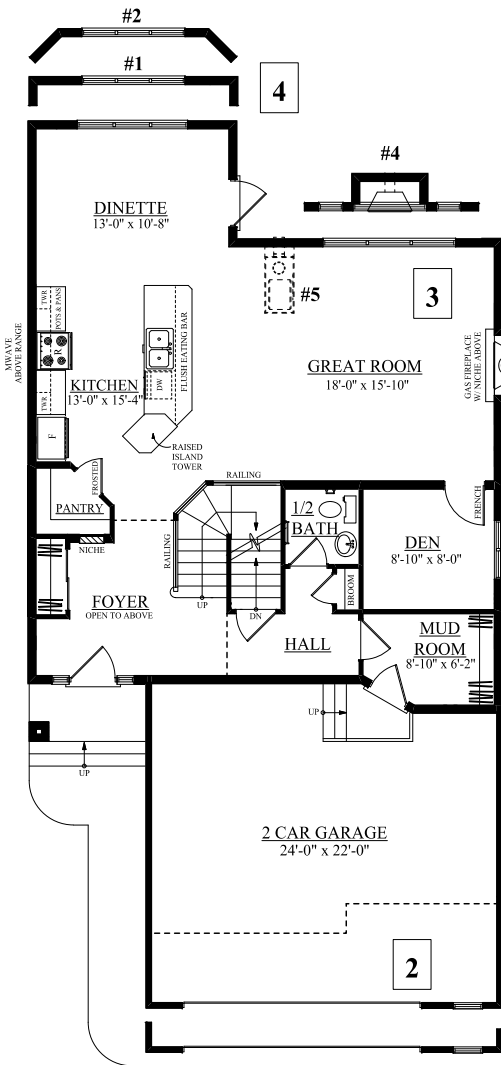
SECOND FLOOR
1075 SQ.FT.

| | | |
|---|---|---|
| 1 ENSUITE W/ CORNER TUB - 6'-0" CORNER SOAKER TUB - 48"x36" SHOWER | 3 ALTERNATE FIREPLACES #1 - CANT. FIREPLACE W/ T.V. NICHE ABOVE #2 - CANT. FIREPLACE W/ ENT. CENTRE (+10 SQFT) #3 - CORNER FIREPLACE (-10 SQFT) #4 - CANT. FIREPLACE W/ 3 WINDOWS #5 - THREE-SIDED FIREPLACE (-10 SQFT) | 5 LOFT FIREPLACE ADD CORNER FIREPLACE |
| 2 LENGTHEN GARAGE 2'-0" - ADDS 2'-0" TO LENGTH OF GARAGE | 4 NOOK ADDITION #1 - ADD 2'-0" BOXOUT TO NOOK (ADDS 28 SQFT) #2 - ADD 2'-0" BAYOUT TO NOOK (ADDS 25 SQFT) | 6 |

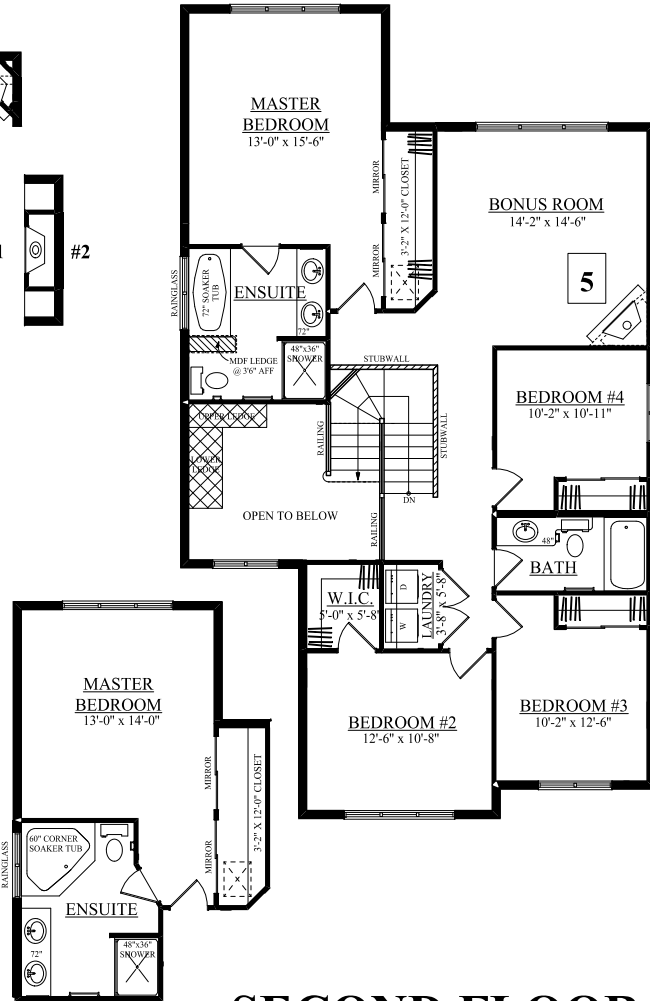
Notes:

The Brighton II

2375 SQ FT - 4 BDR OPTION



MAIN FLOOR
1098 SQ.FT.



SECOND FLOOR
1277 SQ.FT.

| | | |
|---|---|---|
| 1 ENSUITE W/ CORNER TUB - 6'-0" CORNER SOAKER TUB - 48"x36" SHOWER | 3 ALTERNATE FIREPLACES #1 - CANT. FIREPLACE W/ T.V. NICHE ABOVE #2 - CANT. FIREPLACE W/ ENT. CENTRE (+10 SQFT) #3 - CORNER FIREPLACE (-10 SQFT) #4 - CANT. FIREPLACE W/ 3 WINDOWS #5 - THREE-SIDED FIREPLACE (-10 SQFT) | 5 LOFT FIREPLACE ADD CORNER FIREPLACE |
| 2 LENGTHEN GARAGE 2'-0" - ADDS 2'-0" TO LENGTH OF GARAGE | 4 NOOK ADDITION #1 - ADD 2'-0" BOXOUT TO NOOK (ADDS 28 SQFT) #2 - ADD 2'-0" BAYOUT TO NOOK (ADDS 25 SQFT) | 6 |

Notes:

bedrockhomes.ca

VISIT US AT ANY OF OUR SHOWHOMES MON TO THURS 3 - 8PM, WEEKENDS & HOLIDAYS 12 - 5PM

