

# The Bailey

1752 SQ FT - TWO STOREY



Elevation A



Elevation B



Elevation C

[bedrockhomes.ca](http://bedrockhomes.ca)

VISIT US AT ANY OF OUR SHOWHOMES MON TO THURS 3 - 8PM, WEEKENDS & HOLIDAYS 12 - 5PM

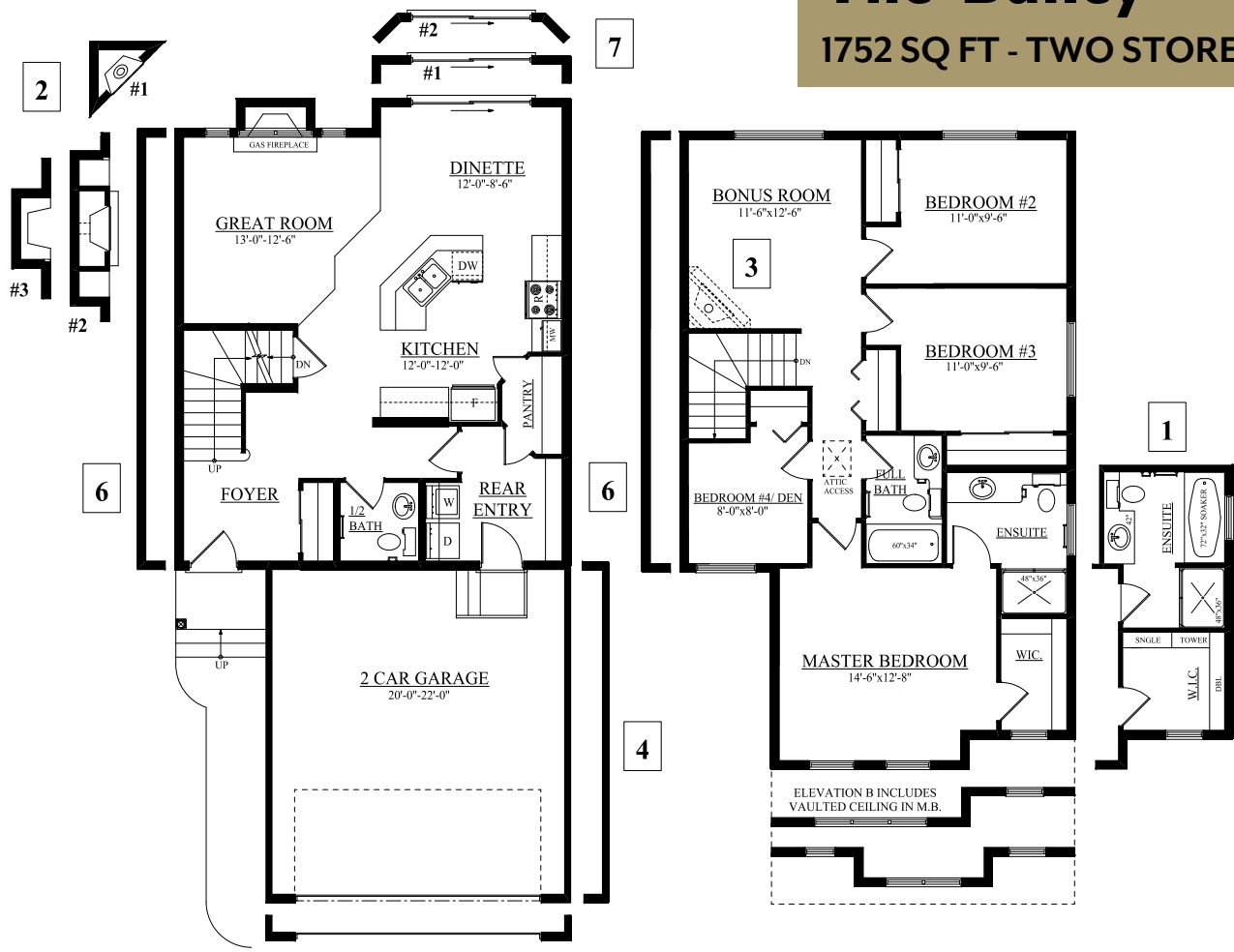
This feature sheet is published by Bedrock Homes Ltd. Floorplans, specifications, home highlights and dimensions shown are approximate and are subject to change without notice. All rights reserved, including the right of reproduction in whole or in part.

11-MAY-11



# The Bailey

1752 SQ FT - TWO STOREY



## MAIN FLOOR

790 SQFT

## SECOND FLOOR

962 SQFT

<b>1 4 PIECE ENSUITE</b> - ADD 6' SOAKER TUB - 48" x 36" SHOWER - 12'-0" x 12'-8" MASTER BEDROOM	<b>4 2' EXT. TO GARAGE</b> - 2'-0" ADDED TO WIDTH OF GARAGE	<b>7 NOOK ADDITION</b> #1 - ADD A 13'-0"x2'-0" BOXOUT TO NOOK (ADDS 26 SQFT) #2 - ADD A 13'-0"x2'-0" BAYOUT TO NOOK (ADDS 23 SQFT)
<b>2 ALTERNATE FIREPLACES</b> #1 - CORNER FIREPLACE C/W TV NICHE (SUBTRACT 10 SQFT) #2 - CANT. FIREPLACE WITH ENTERTAINMENT CENTRE (ADDS 10 SQFT) #3 - CANT. FIRE PLACE	<b>5 LENGTHEN GARAGE 2'-0"</b> - ADDS 2'-0" TO LENGTH OF GARAGE	<b>8</b>
<b>3 BONUS ROOM FIREPLACE</b> - ADD CORNER FIREPLACE TO BONUS ROOM	<b>6 WIDEN HOUSE BY 2'-0"</b> - 2' EXT. TO MAIN AND SECOND FLOOR - ADDS 102 SQ.FT. TOTAL TO HOUSE	<b>9</b>

Notes:

---



---



---



---



---



---

bedrockhomes.ca



VISIT US AT ANY OF OUR SHOWHOMES MON TO THURS 3 - 8PM, WEEKENDS & HOLIDAYS 12 - 5PM