

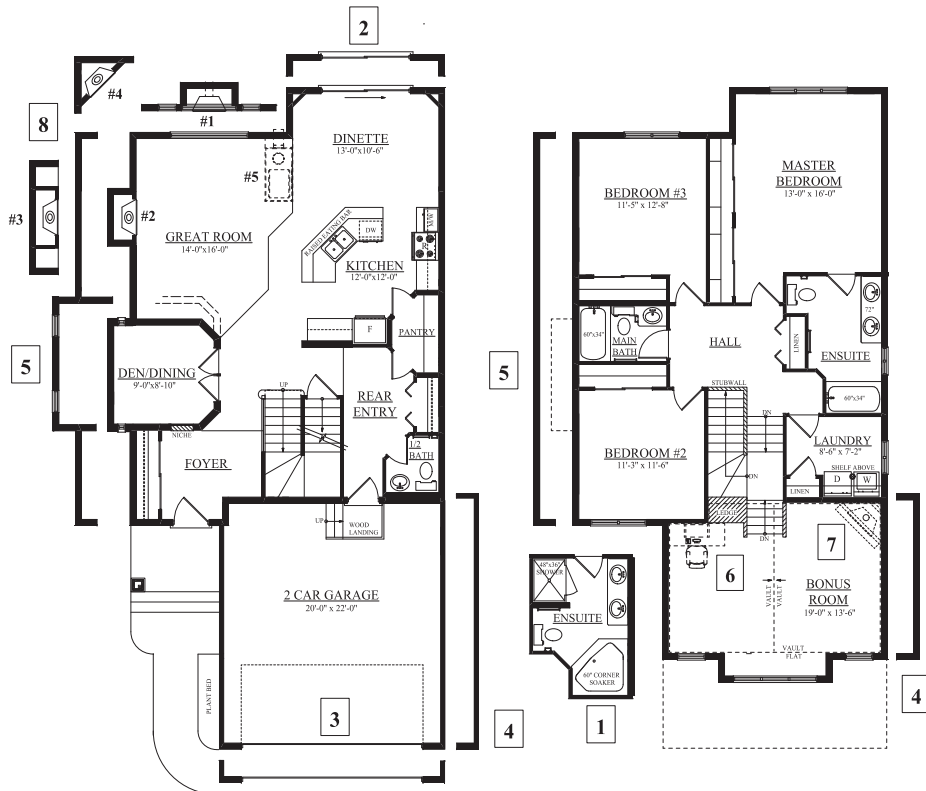


THE MONTANA D 2258 Sq.Ft

733 Adams Way SW

Two-Storey

Job # AMB-0-032029, Lot 37, Block 6, Plan 072 9436



MAIN FLOOR
1027 SQ.FT.

SECOND FLOOR
1231 SQFT

- A warm front entry with upgraded maple railings (stained to match the hardwood) with metal spindles welcomes you to this elegant home complete with 9 foot ceilings on the main floor.
- Tiled flooring in the front foyer, back entry, kitchen, dinette, pantry, 2nd floor laundry room and all bathrooms.
- 1 1/4" Santa Cecilia Light granite countertop, Espresso maple cabinets, pot lights on a dimmer switch, walk through pantry, stainless steel hood fan, 3 sided island complete with pendant lighting and raised eating bar highlight this gourmet kitchen.
- Gleaming Maple Java hardwood flooring throughout the great room and den creates an elegant, yet atmosphere.
- Inviting master bedroom features lots of natural light, large closet with organizer and a 4 piece ensuite complete with: large corner soaker tub, double sink, low flush toilet and 4' shower.
- Premium lighting package, oversized/low E windows and 8 ft. patio door provide ample light.
- Interior doors are in the Cheyenne style with brushed chrome lever hardware.
- High efficiency furnace and 50 gallon hot water tank.
- 2 car front attached garage (20' x 22') is insulated and drywalled and comes with keyed security entrance pad and 2 controllers.

NOTES: _____

PRICE: _____

POSSESSION DATE: _____

A 759 Adams Way SW, Edmonton AB
 P 780.757.5880
 F 780.756.2069
 E amblesidesales@bedrockhomes.ca

Showhome Hours: Mon - Thurs 3 - 8pm,
 Sat, Sun & Holidays 12 - 5pm

