



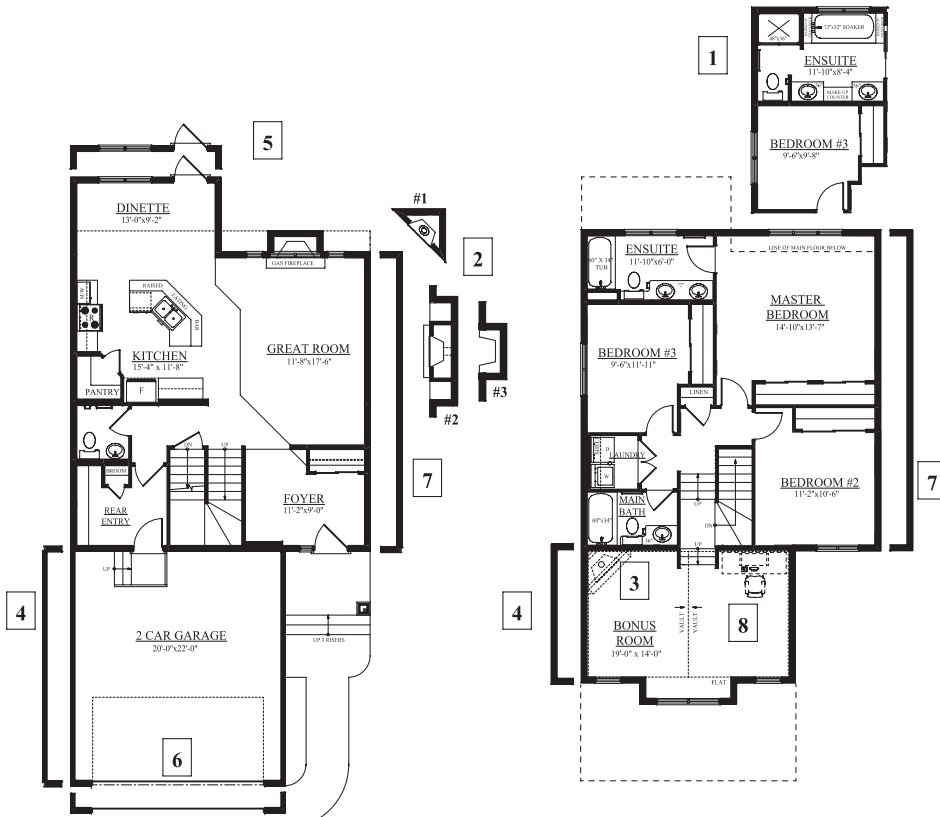
Job # AMB-0-032045, Lot 68, Block 7, Plan 072 9436

# THE CONWAY D 1928 Sq.Ft

## 696 Adams Way SW

### Two-Storey

- A warm front entry with upgraded railings (painted to match the trim) welcomes you to this elegant home.
- Tiled flooring in the large front foyer, back entry, 2nd floor laundry closet and all bathrooms.
- 1 1/4" Santa Cecilia Light granite countertop, Espresso maple cabinets, pot lights on a dimmer switch, walk-in pantry, stainless steel hood fan, 3 sided island complete with pendant lighting and raised eating bar highlight this gourmet kitchen.
- Gleaming Maple Java hardwood flooring throughout the great room, kitchen and dining area creates an elegant atmosphere.
- Inviting master bedroom features lots of natural light, large walk-in closet and a four piece ensuite complete with: soaker tub, low flush toilet and 4' shower.
- Attractive lighting package, oversized/low E windows and French patio door provide ample natural light.
- Interior doors are in the Cheyenne style with brushed chrome lever hardware.
- High efficiency furnace and 50 gallon hot water tank.
- 2 car front attached garage (20' x 22') is insulated and drywalled and comes with keyed security entrance pad and 2 controllers.



**MAIN FLOOR PLAN**  
892 SQ.FT.

**SECOND FLOOR PLAN**  
1048 SQ.FT.

NOTES: \_\_\_\_\_  
 PRICE: \_\_\_\_\_  
 POSSESSION DATE: \_\_\_\_\_

A 759 Adams Way SW, Edmonton AB  
 P 780.757.5880  
 F 780.756.2069  
 E amblesidesales@bedrockhomes.ca

Showhome Hours: Mon - Thurs 3 - 8pm,  
 Sat, Sun & Holidays 12 - 5pm

