



THE MADISON D

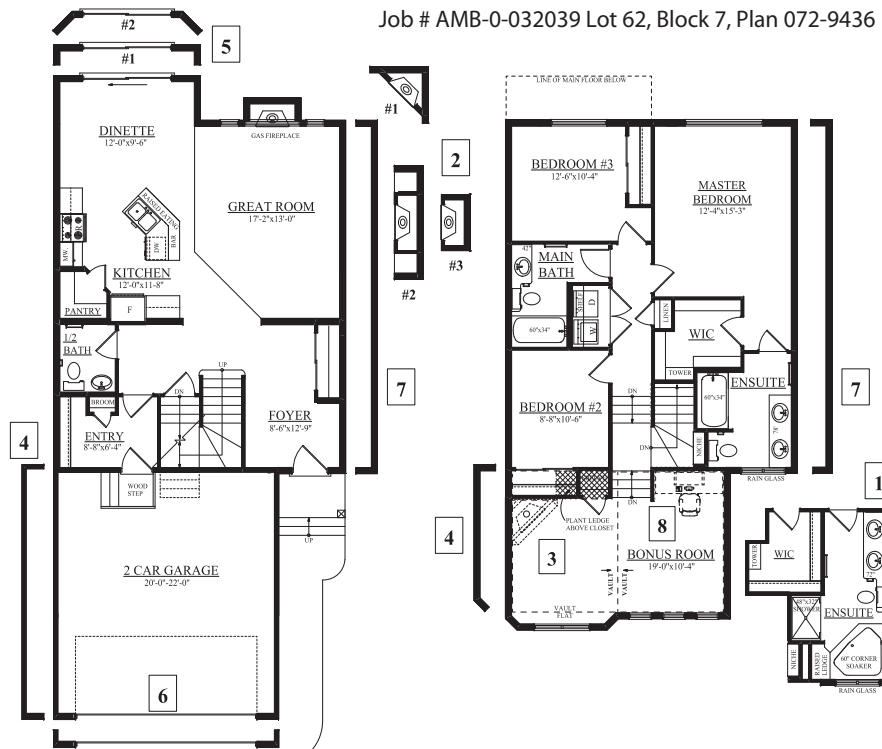
- 1928 SQ FT

684 Adams Way SW

Two-Storey

- A warm front entry with upgraded maple railings (stained to match the hardwood) with metal spindles both welcomes and leads to your second floor
- Tile flooring in the front foyer, back entry, laundry closet, and all bathrooms
- Hardwood throughout great room, kitchen, dinette, and hall provides a subtle elegance to your home
- Inviting master bedroom features lots of natural light, large walk-in closet and four piece ensuite complete with: large corner soaker tub, double sinks, low flush toilet, and 4' shower
- Maple cabinets with crown molding, granite counter tops, island with raised eating bar and pendent lighting, 4 pot lights on a dimmer switch, pots and pan drawers, and walk-in pantry await you in your new kitchen
- Premium lighting package, oversized / Low E windows and 8 ft. patio door provide abundant light in all seasons
- High efficiency furnace and 50 gal hot water tank
- 2 car front attached garage (20'x22') insulated and dry walled

Job # AMB-0-032039 Lot 62, Block 7, Plan 072-9436



MAIN FLOOR
881 SQ. FT.

SECOND FLOOR
1047 SQ. FT.

A 759 Adams Way SW, Edmonton AB
 P 780.757.5880
 F 780.756.2069
 E amblesidesales@bedrockhomes.ca

Showhome Hours: Mon - Thurs 3 - 8pm,
 Sat, Sun & Holidays 12 - 5pm



*Artist rendering and floorplan are not exactly as shown. Refer to blueprints for exact representation of spec home.