



# THE CONWAY E

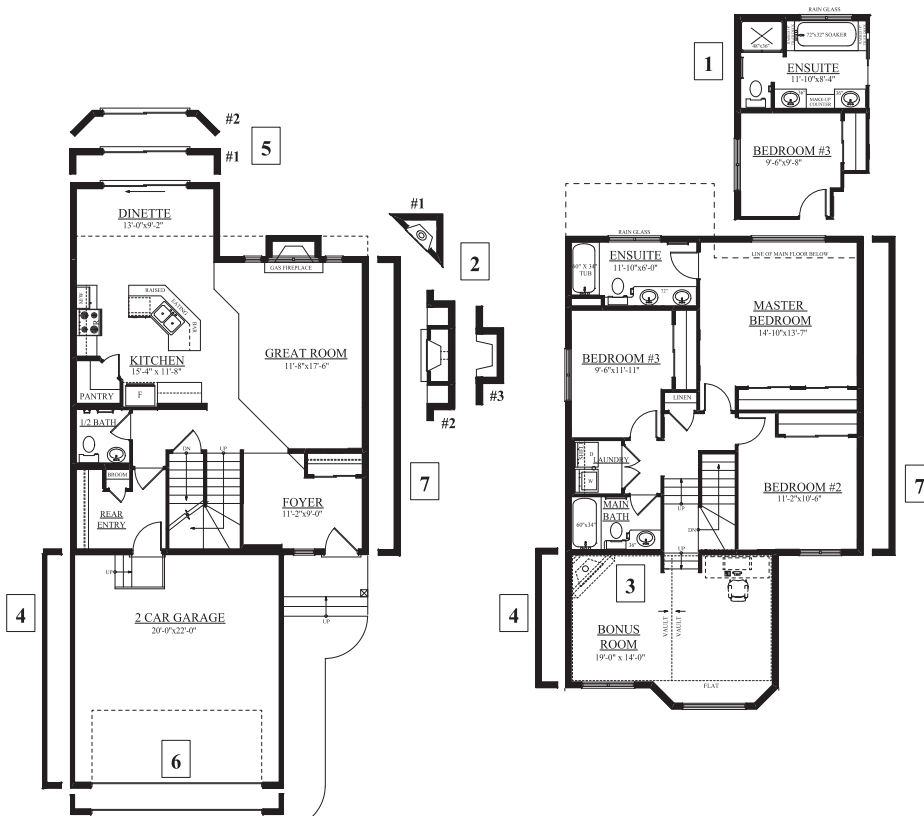
- 1940 SQ FT

690 Adams Way SW

Two-Storey

Job # AMB-0-032042 Lot 65, Block 7, Plan 072-9436

- 3 Bedrooms, 2 1/2 baths, main floor laundry, large bonus room and spacious kitchen
- Tile in the front foyer, back entrance, laundry, 1/2 bath, main bath and ensuite add a subtle elegance to your home
- Hardwood throughout great room, kitchen, dinette, and hall is a great addition to any interior
- 1 1/4" granite counters, maple cabinets with crown molding, 4 pot lights on a dimmer switch, walk-in pantry, 3 sided island completed by pendent lighting and raised eating bar highlight this kitchen
- The premium lighting package and maple railings (stained to match the hardwood) with metal spindles enhance the appearance of the entire home
- Airy master bedroom offers both storage (walk-in closet) and comfort (4 piece ensuite complete with 6' soaker tub and separate 4' shower)
- Oversized, low E windows and 8 ft. patio door provides ample natural light
- High efficiency furnace and 50 gal hot water tank are standard in this home
- 2 car front attached garage (20'x22') insulated and dry walled



**MAIN FLOOR PLAN**  
892 SQ. FT.

**SECOND FLOOR PLAN**  
1048 SQ. FT.

A 759 Adams Way SW, Edmonton AB  
 P 780.757.5880  
 F 780.756.2069  
 E amblesidesales@bedrockhomes.ca

Showhome Hours: Mon - Thurs 3 - 8pm,  
 Sat, Sun & Holidays 12 - 5pm



\*Artist rendering and floorplan are not exactly as shown. Refer to blueprints for exact representation of spec home.