

---

# THE MORRISON - 1734 SQ FT

---



NATIONAL HERITAGE 'D'

---



PRAIRIE

---

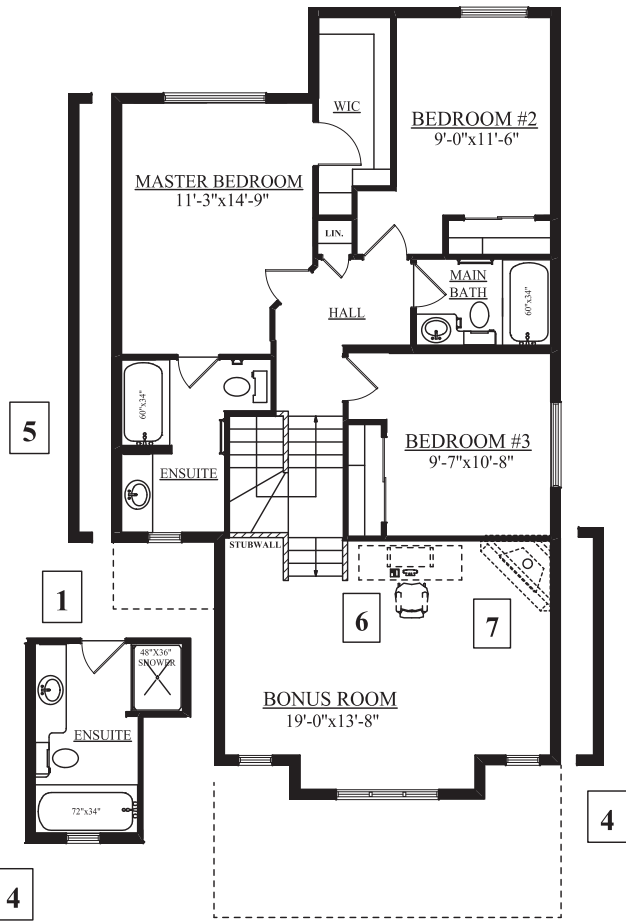
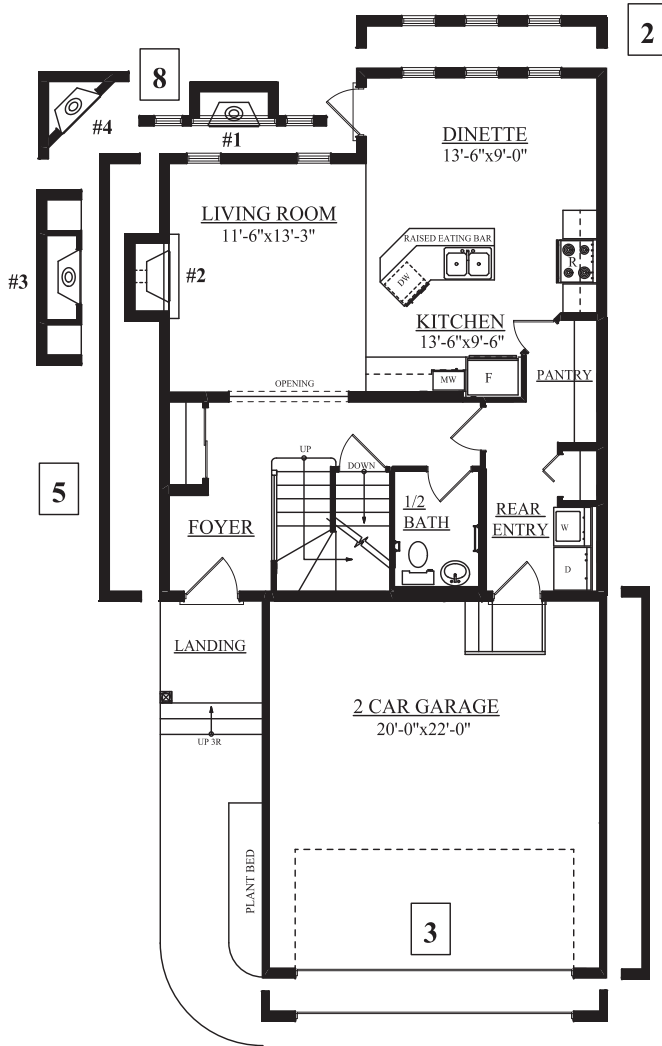
This feature sheet is published by Bedrock Homes Ltd. Floorplans, specifications, home highlights, and dimensions shown are approximate and are subject to change without notice. All rights reserved, including the right of reproduction in whole or in part.

28MAY10 Ambleside



**BEDROCK**  
• HOMES LTD. •  
[www.bedrockhomes.ca](http://www.bedrockhomes.ca)

# THE MORRISON - 1734 SQ FT



<b>1</b>   4 PIECE ENSUITE - INCLUDES 60" SOAKER TUB - 48" SHOWER - BANJO TOP VANITY	<b>4</b>   2' EXT. TO GARAGE & BONUS - 2'-0" ADDED TO WIDTH OF GARAGE & BONUS ROOM	<b>7</b>   BONUS ROOM FIREPLACE - ADD CORNER FIREPLACE TO BONUS ROOM
<b>2</b>   DINETTE ADDITION - ADD 2' -0" BOXOUT EXTENSION	<b>5</b>   WIDEN HOUSE BY 2'-0" - WIDEN HOUSE BY 2'-0" ON EXT. WALL	<b>8</b>   ALTERNATE FIREPLACES #1 - CANT. FIREPLACE W/ 3 WINDOWS #2 - CANT. FIRE PLACE #3 - CANT. FIREPLACE W/ ENTERTAINMENT CENTRE #4 - CORNER FIREPLACE C/W TV NICHE
<b>3</b>   LENGTHEN GARAGE 2'-0" - ADDS 2'-0" TO LENGTH OF GARAGE	<b>6</b>   COMPUTER DESK - BUILT IN COMPUTER DESK IN BONUS ROOM	




---



---



---



---



---