
THE MADISON - 1928 SQ FT



NATIONAL HERITAGE 'D'

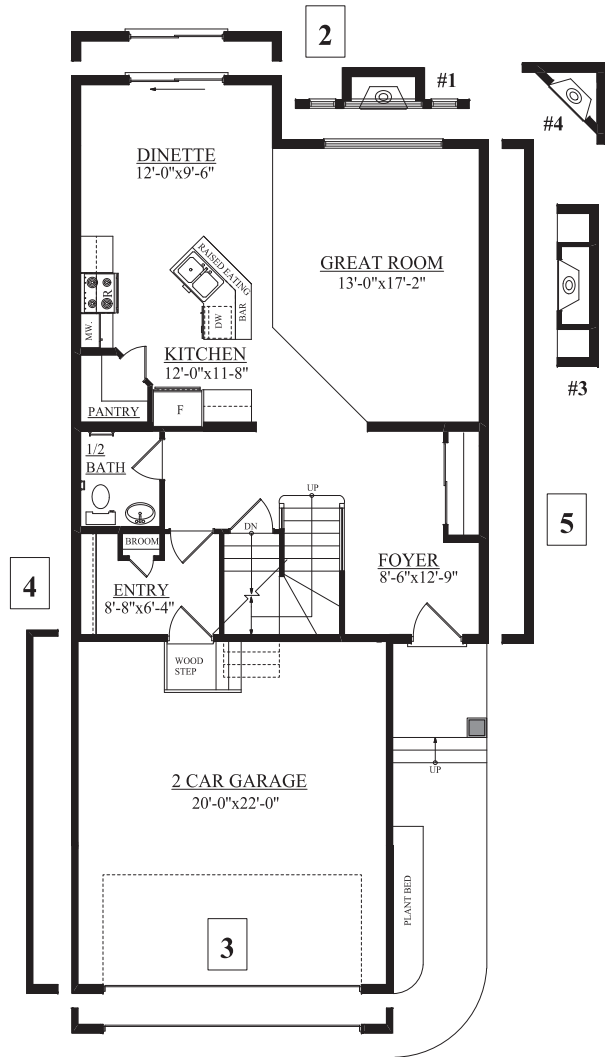


PRAIRIE 'E'

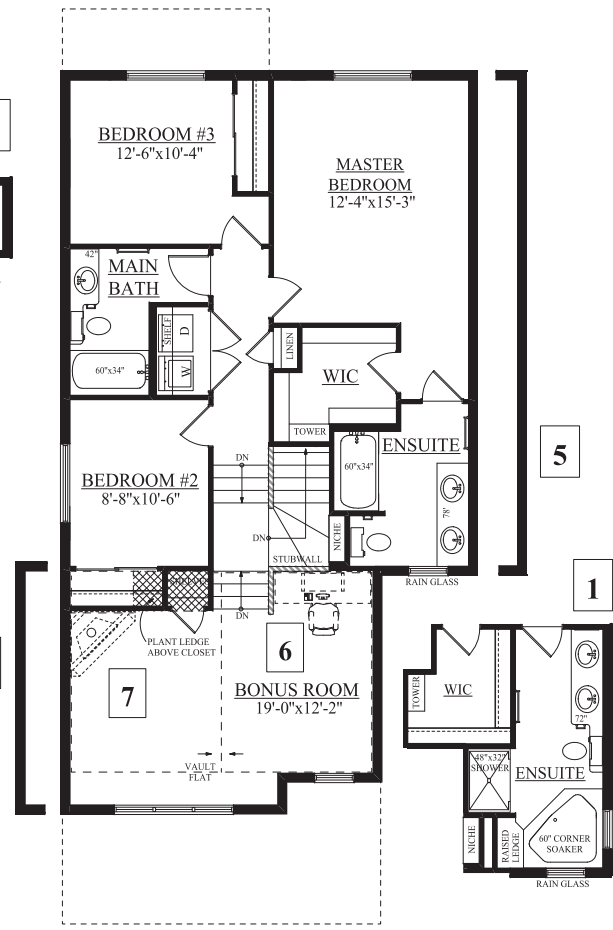
This feature sheet is published by Bedrock Homes Ltd. Floorplans, specifications, home highlights, and dimensions shown are approximate and are subject to change without notice. All rights reserved, including the right of reproduction in whole or in part.

28MAY10 Ambleside

THE MADISON - 1928 SQFT



MAIN FLOOR
881 SQFT



SECOND FLOOR
1047 SQFT

1 4 PIECE ENSUITE - INCLUDES 60" CORNER SOAKER TUB - 48" SHOWER - BANJO TOP VANITY & DOUBLE SINKS	4 2' EXT. TO GARAGE & BONUS - 2'-0" ADDED TO WIDTH OF GARAGE & BONUS ROOM	7 BONUS ROOM FIREPLACE - ADD CORNER FIREPLACE TO BONUS ROOM
2 DINETTE ADDITION - ADD 2' -0" BOXOUT TO DINETTE	5 WIDEN HOUSE BY 2'-0" - WIDEN HOUSE BY 2'-0" ON EXT. WALL	8 ALTERNATE FIREPLACES #1 - CANT. FIREPLACE W/ 3 WINDOWS #2 - CANT. FIRE PLACE #3 - CANT. FIREPLACE W/ ENTERTAINMENT CENTRE #4 - CORNER FIREPLACE C/W TV NICHE
3 LENGTHEN GARAGE 2'-0" - ADDS 2'-0" TO LENGTH OF GARAGE	6 COMPUTER DESK - BUILT IN COMPUTER DESK IN BONUS ROOM	