
THE BRIGHTON - 2132 SQ FT



NATIONAL HERITAGE 'D' - 2132 sq. ft.

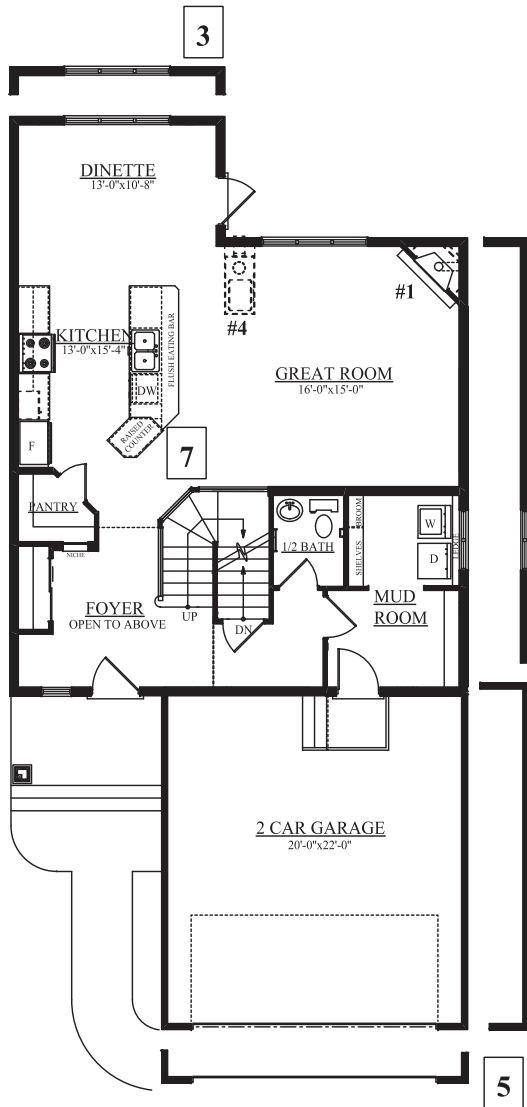
This feature sheet is published by Bedrock Homes Ltd. Floorplans, specifications, home highlights, and dimensions shown are approximate and are subject to change without notice. All rights reserved, including the right of reproduction in whole or in part.

28MAY10 Ambleside



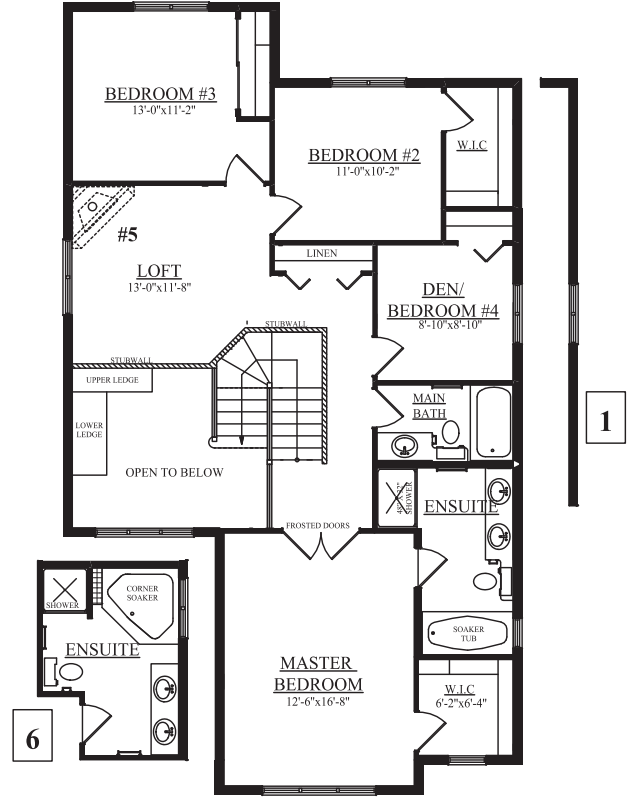
BEDROCK
• HOMES LTD. •
www.bedrockhomes.ca

THE BRIGHTON - 2132 SQFT



MAIN FLOOR

1012 SQ.FT.



SECOND FLOOR

1120 SQ.FT.

1 WIDEN HOUSE BY 2'-0"	2 ALTERNATE FIREPLACES	3 DINETTE ADDITION
- ADD 2' -0" EXTENSION TO MAIN AND SECOND FLOOR	#1 - CORNER FIREPLACE C/W TV NICHE #2 - CANT. FIREPLACE WITH ENT. CENTRE #3 - CANT. FIRE PLACE #4 - THREE-SIDDED FIREPLACE #5 - CORNER FIREPLACE TO BONUS RM	- ADD 2' -0" BOXOUT TO DINETTE
4 2' EXT. TO GARAGE	5 LENGTHEN GARAGE 2'-0"	6 ENSUITE W/ CORNER TUB
- 2'-0" ADDED TO WIDTH OF GARAGE	- ADDS 2'-0" TO LENGTH OF GARAGE	- CORNER SOAKER TUB
7 KITCHEN ISLAND UPGRADE		- 36"x36" SHOWER
- ADD WINE RACK IN RAISED TOWER		- VANITY WITH DOUBLE SINKS